

**FOR LEASE**

**FULLY-REFRESHED,  
PROFESSIONAL  
OFFICE SPACE**

---

420 THE PARKWAY  
UNIT H  
GREER, SC 29650



BRAD DOYLE  
864.237.8458

All information deemed reliable, but not guaranteed.

KDS   
**CAINE**  
COMMERCIAL REAL ESTATE



## AVAILABLE SPACE

<b>Address:</b>	420 The Parkway Unit H Greer, SC 29650
<b>Lease Rate:</b>	\$24 per SF, Modified Gross
<b>Available SF:</b>	±2,500 SF
<b>Zoning:</b>	PD (Planned Development)
<b>Specific Terms:</b>	Inclusive of Taxes, Insurance & Common Area Maintenance
<b>Tax Map Number:</b>	0534390100500

## PROPERTY HIGHLIGHTS

- Professional office space in high-successful Thornblade submarket
- Brand new refresh just completed Spring 2026, new flooring, paint & lighting throughout
- Efficient layout with 6 to 7 windowed offices, expansive conference room, and 3 restrooms within the space
- Varied space options available from 2,500 SF to 1,250 SF (with split foyer), to short-term, individual office suites offered
- CONTACT BROKER FOR RATE DETAILS ON INDIVIDUAL OFFICE SUITES



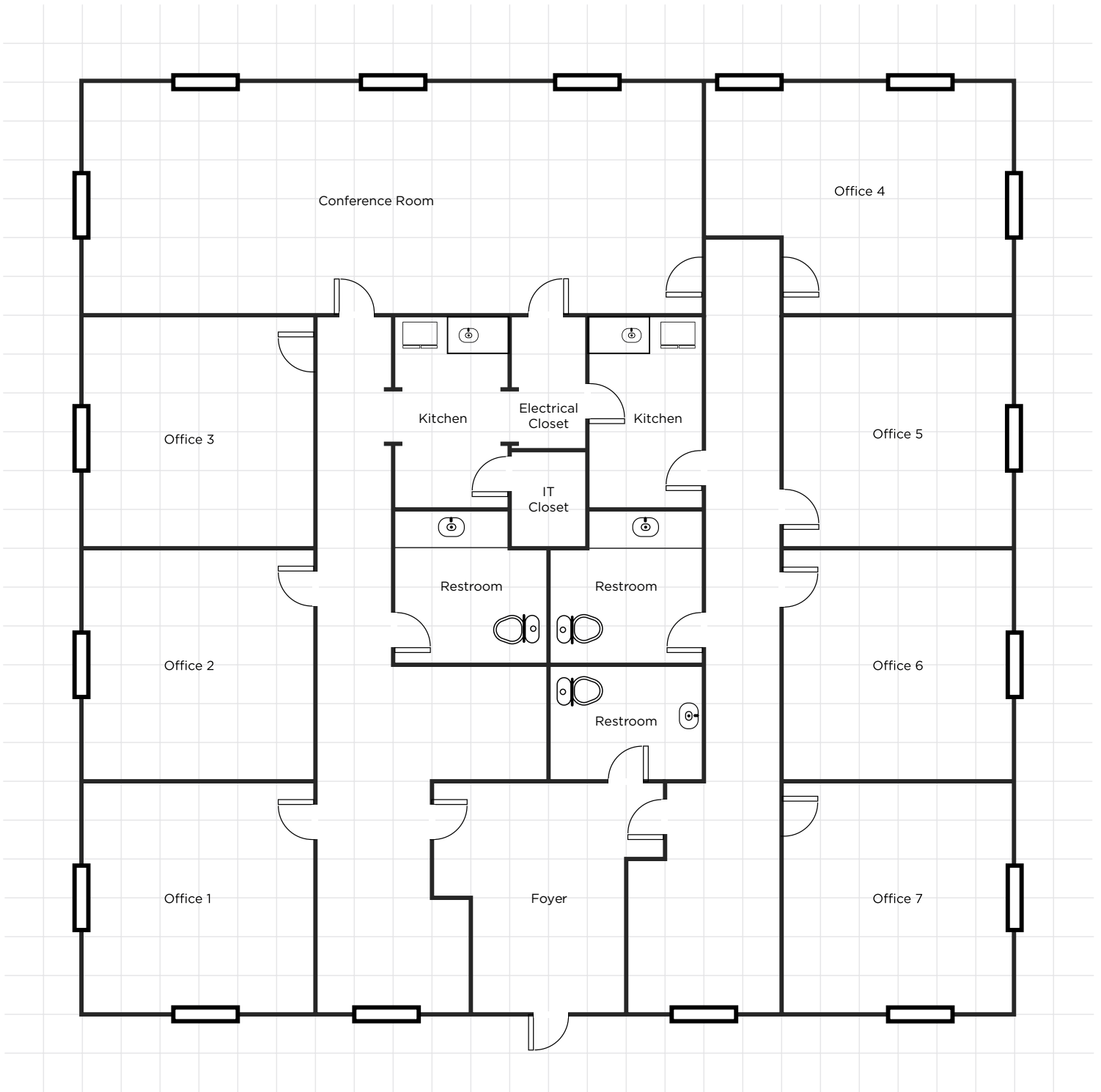
420 THE PARKWAY  
UNIT H  
GREER, SC 29650

All information deemed reliable, but not guaranteed.

BRAD DOYLE  
864.2378458  
BDOYLE@KDSCAINE.COM



# FLOOR PLAN



1 square = 2'



420 THE PARKWAY  
UNIT H  
GREER, SC 29650

All information deemed reliable, but not guaranteed.

BRAD DOYLE  
864.2378458  
BDOYLE@KDSCAINE.COM

# LOCATION



420 THE PARKWAY  
UNIT H  
GREER, SC 29650

All information deemed reliable, but not guaranteed.

BRAD DOYLE  
864.2378458  
BDOYLE@KDSCAINE.COM

## LOCATION, LOCATION, LOCATION

**1.6 Million People**

10 Upstate SC Counties

**More Than 575**

International Companies

**#3 GDP Worldwide**

At \$6.0T, the Southeast United State GDP Ranks #3 in the World.<sup>1</sup>

**160 New Locations**

More than 160 companies have announced new locations in the Upstate over the last 5 years.



## A CRITICAL MANUFACTURING HUB



## SOUTH CAROLINA IS OPEN FOR BUSINESS

**#2**

in the U.S. for Manufacturing 2024  
*Site Selection Group*

**#2**

State for Doing Business 2024  
*Area Development*

**\$18B+**

Capital Investment in the  
Upstate over Last 5 years



**REAL RELATIONSHIPS, NOT JUST REAL ESTATE**

**VERDAE OFFICE**

340 Rocky Slope Road  
Suite 302  
Greenville, SC 29607

**DOWNTOWN OFFICE**

117 Williams Street  
Greenville, SC 29601

BRAD DOYLE  
864.237.8458  
BDOYLE@KDSCAINE.COM

Information contained herein has been obtained from sources deemed reliable, but we cannot guarantee it.  
All property information is subject to change or withdrawal without notice.