

FOR SALE

HIGH VISIBILITY CORNER LOT IN GREER

280, 300, 302, & 360
OLD WOODRUFF ROAD
GREER, SC 29651



GREG NORRIS
864.494.7061

All information deemed reliable, but not guaranteed.

KDS 
CAINE
COMMERCIAL REAL ESTATE



PROPERTY DETAILS

Address:	280, 300, 302 & 360 Old Woodruff Road Greer, SC 29651
Sales Price:	\$800,000
Acreage:	±2.06 Acres
County:	Spartanburg
Property Use:	Residential / Commercial
Tax Map IDs:	9-04-14-089.00, 9-04-14-090.00, 9-04-14-088.00, 9-04-14-086.00

PROPERTY FEATURES

This ±2 acre corner parcel at New Woodruff Road and Old Woodruff Road offers outstanding visibility, accessibility, and development potential in a rapidly expanding commercial and residential corridor. Located just minutes from downtown Greer, BMW, and GSP, this property is surrounded by a dynamic mix of new residential neighborhoods, retail centers, and professional developments. All utilities available (buyer to verify). The lot offers excellent visibility, multiple access points, and proximity to public utilities.



280, 300, 302, & 360
OLD WOODRUFF ROAD
GREER, SC 29651

All information deemed reliable, but not guaranteed.

GREG NORRIS
864.494.7061
GNORRIS@KDSCAINE.COM

PROPERTY PHOTOS

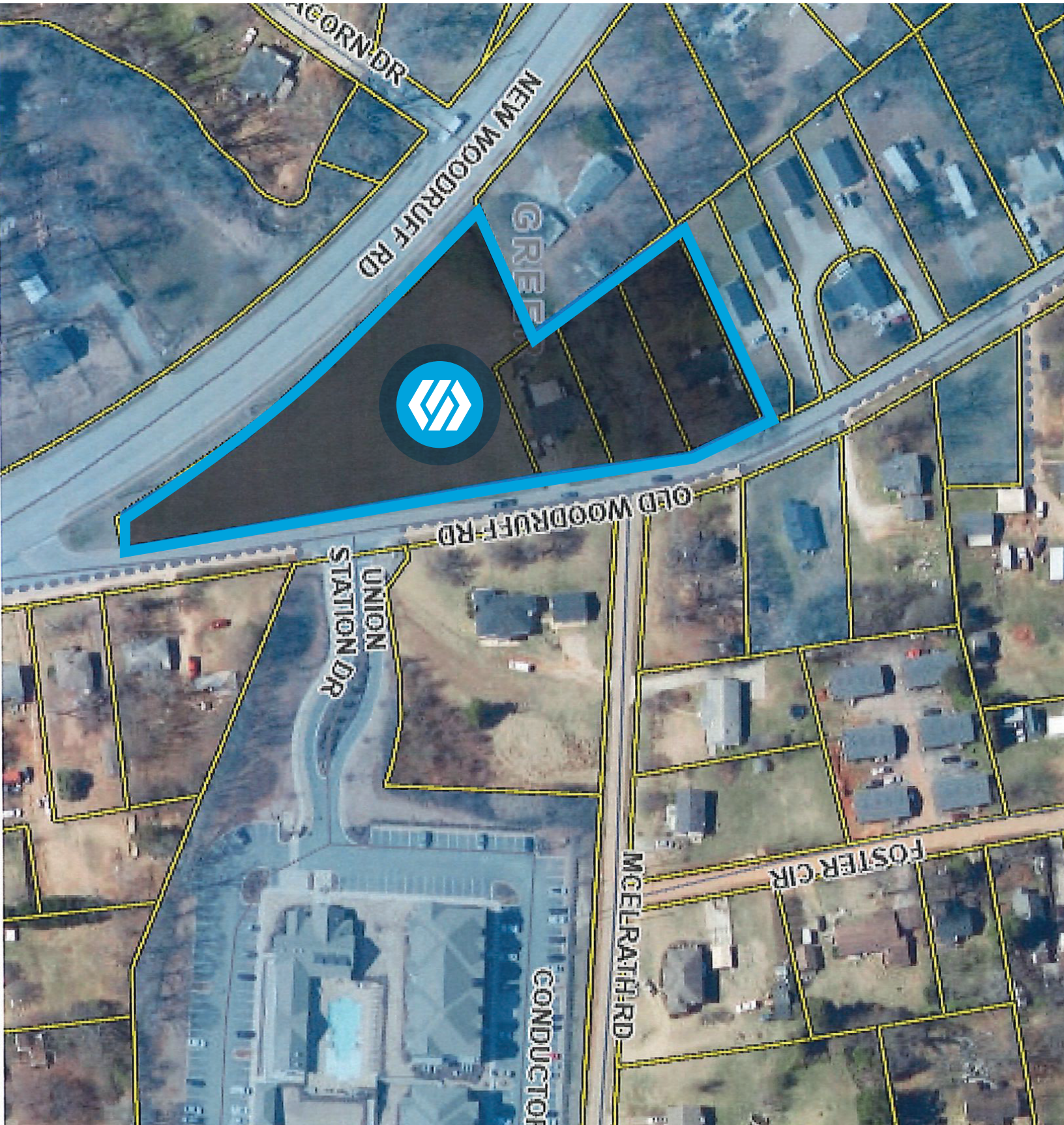


280, 300, 302, & 360
OLD WOODRUFF ROAD
GREER, SC 29651

All information deemed reliable, but not guaranteed.

GREG NORRIS
864.494.7061
GNORRIS@KDSCAINE.COM

LOCATION

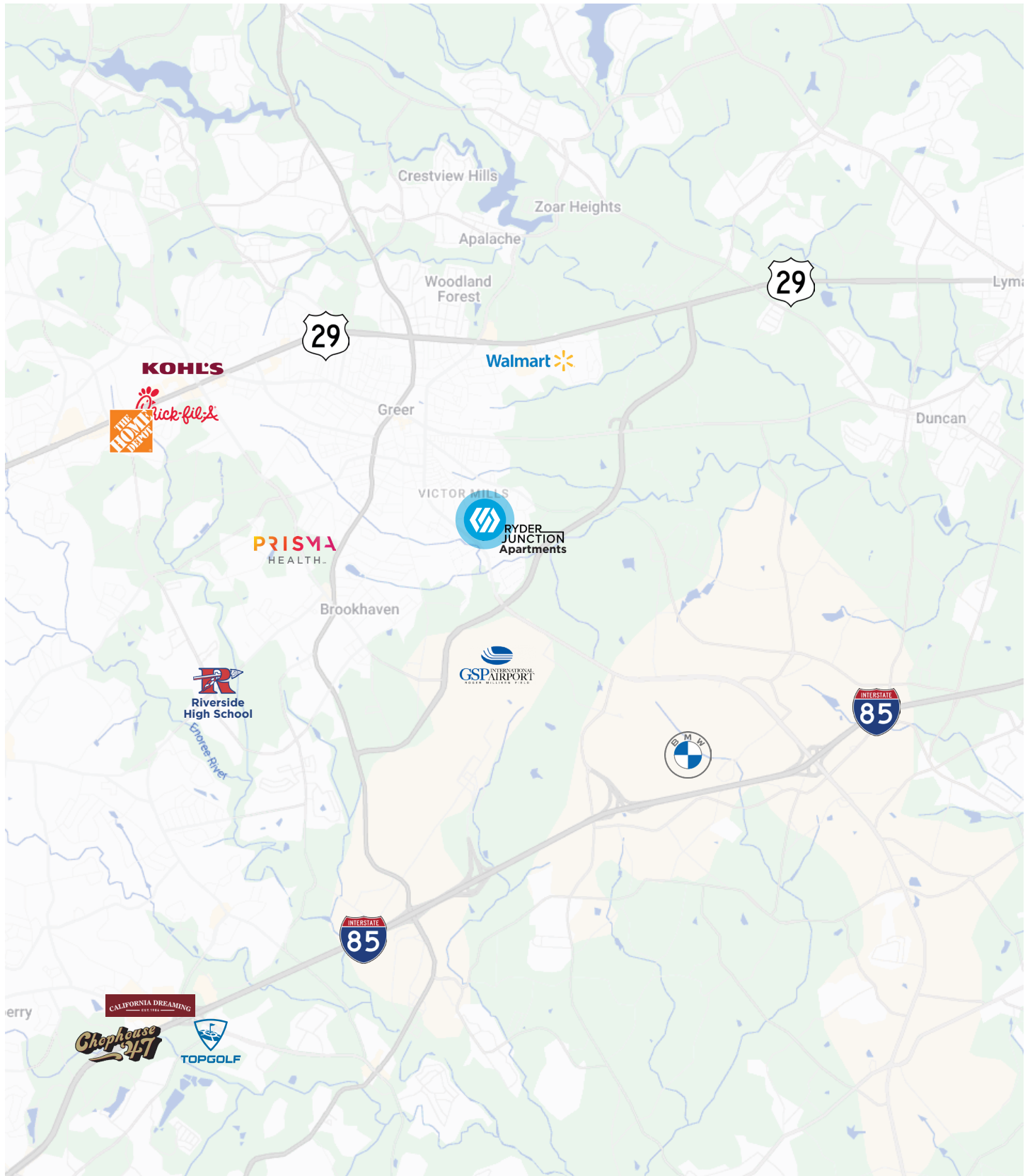


280, 300, 302, & 360
OLD WOODRUFF ROAD
GREER, SC 29651

All information deemed reliable, but not guaranteed.

GREG NORRIS
864.494.7061
GNORRIS@KDSCAINE.COM

LOCATION



280, 300, 302, & 360
OLD WOODRUFF ROAD
GREER, SC 29651

All information deemed reliable, but not guaranteed.

GREG NORRIS
864.494.7061
GNORRIS@KDSCAINE.COM

LOCATION, LOCATION, LOCATION

1.6 Million People

10 Upstate SC Counties

More Than 575

International Companies

#3 GDP Worldwide

At \$6.0T, the Southeast United State GDP Ranks #3 in the World.¹

160 New Locations

More than 160 companies have announced new locations in the Upstate over the last 5 years.



A CRITICAL MANUFACTURING HUB



SOUTH CAROLINA IS OPEN FOR BUSINESS

#1

State for Manufacturing in 2022
Site Selection Group

#2

State for Doing Business
Area Development

#1

Fastest Growing State
in the U.S.

Data & Information Provided by Upstate Alliance

¹ Southeast defined as 12 states including: Alabama, Arkansas, Florida, Georgia, Kentucky, Louisiana, Mississippi, North Carolina, South Carolina, Tennessee, & West Virginia



REAL RELATIONSHIPS, NOT JUST REAL ESTATE

VERDAE OFFICE

340 Rocky Slope Road
Suite 302
Greenville, SC 29607

DOWNTOWN OFFICE

117 Williams Street
Greenville, SC 29601

GREG NORRIS
864.494.7061
GNORRIS@KDSCAINE.COM

Information contained herein has been obtained from sources deemed reliable, but we cannot guarantee it.
All property information is subject to change or withdrawal without notice.