

## 104-A N. Kings Court Greenville, SC 29605

±5,000 SF of Industrial/Warehouse Space  
for Lease

<b>Property Type</b>	Industrial, Warehouse
<b>Status</b>	For Lease
<b>Lease Rate</b>	\$3,000/Month NNN
<b>Square Feet</b>	+/- 5,000 Square Feet
<b>Zoning</b>	S-1
<b>County</b>	Greenville



### AGENT CONTACT



GEORGE ZIMMERMAN, CCIM

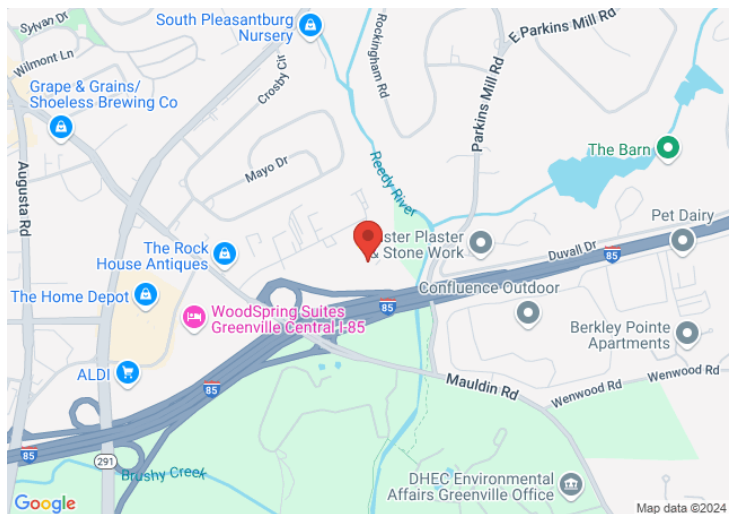
[gzimmerman@kdscaine.com](mailto:gzimmerman@kdscaine.com)

[O: 864-242-4200](tel:864-242-4200)

[M: 864-979-5257](tel:864-979-5257)

### PROPERTY FEATURES

- ±5,000 SF, ±1,000 SF of Office Space
- 1 Loading Dock, 1 Drive In Door
- Available January 1, 2025



*All information contained herein has been obtained from sources deemed reliable,  
but we cannot guarantee it. It is also subject to change without notice.*

340 Rocky Slope Rd., Suite 302, Greenville, SC 29607

 864-242-4200 · [kdscaine.com](http://kdscaine.com) ·  [admin@kdscaine.com](mailto:admin@kdscaine.com)

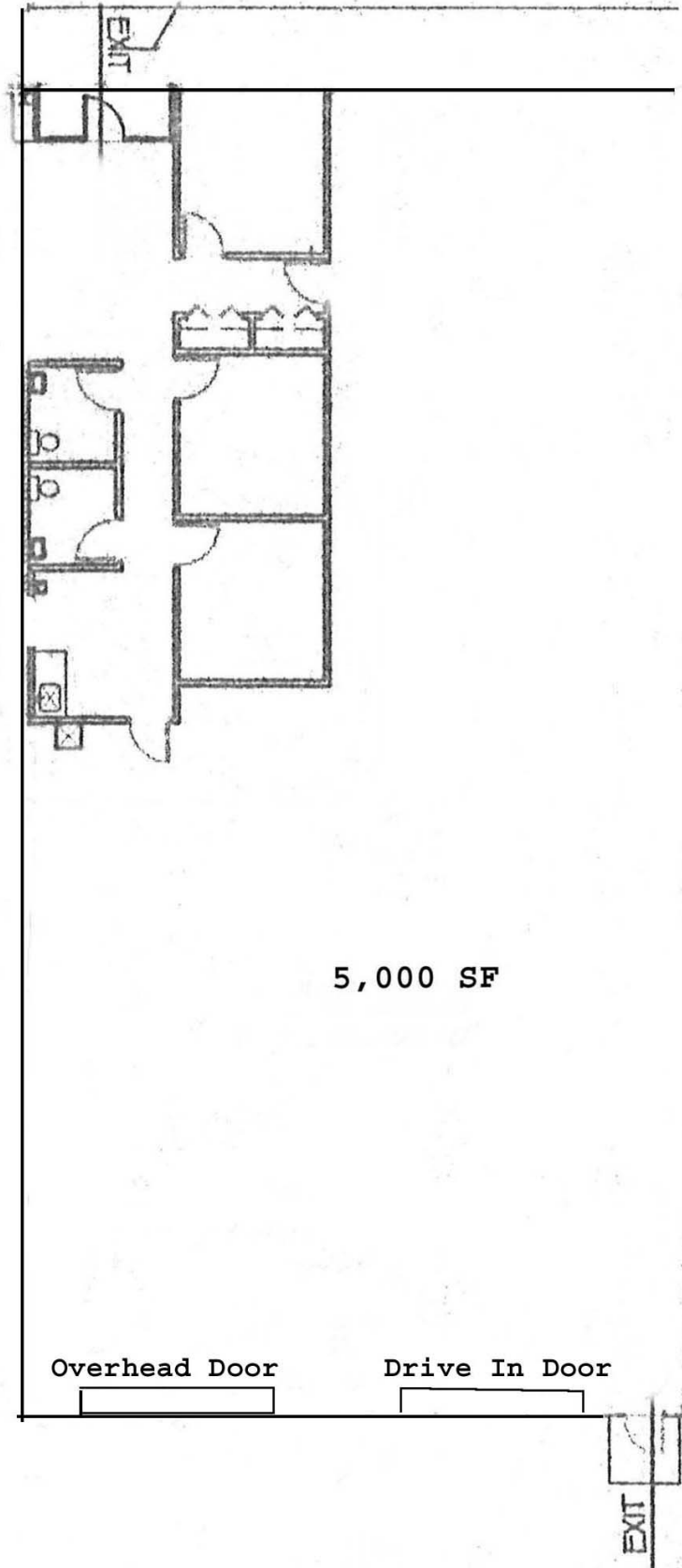


*All information contained herein has been obtained from sources deemed reliable, but we cannot guarantee it. It is also subject to change without notice.*

**340 Rocky Slope Rd., Suite 302, Greenville, SC 29607**

**☎ 864-242-4200 · [kdscaine.com](http://kdscaine.com) · ✉ [admin@kdscaine.com](mailto:admin@kdscaine.com)**

FLOOR PLAN



*All information contained herein has been obtained from sources deemed reliable, but we cannot guarantee it. It is also subject to change without notice.*

340 Rocky Slope Rd., Suite 302, Greenville, SC 29607

☎ 864-242-4200 · [kdscaine.com](http://kdscaine.com) · ✉ [admin@kdscaine.com](mailto:admin@kdscaine.com)