

# LEASE

## MARY BLACK FOUNDATION BUILDING

349 E Main St Spartanburg, SC 29302



**AVAILABLE** +/-3,189 RSF OFFICE  
**LEASE RATE** \$25/SF FULL SERVICE

---

**Tim Satterfield**  
864-415-2373

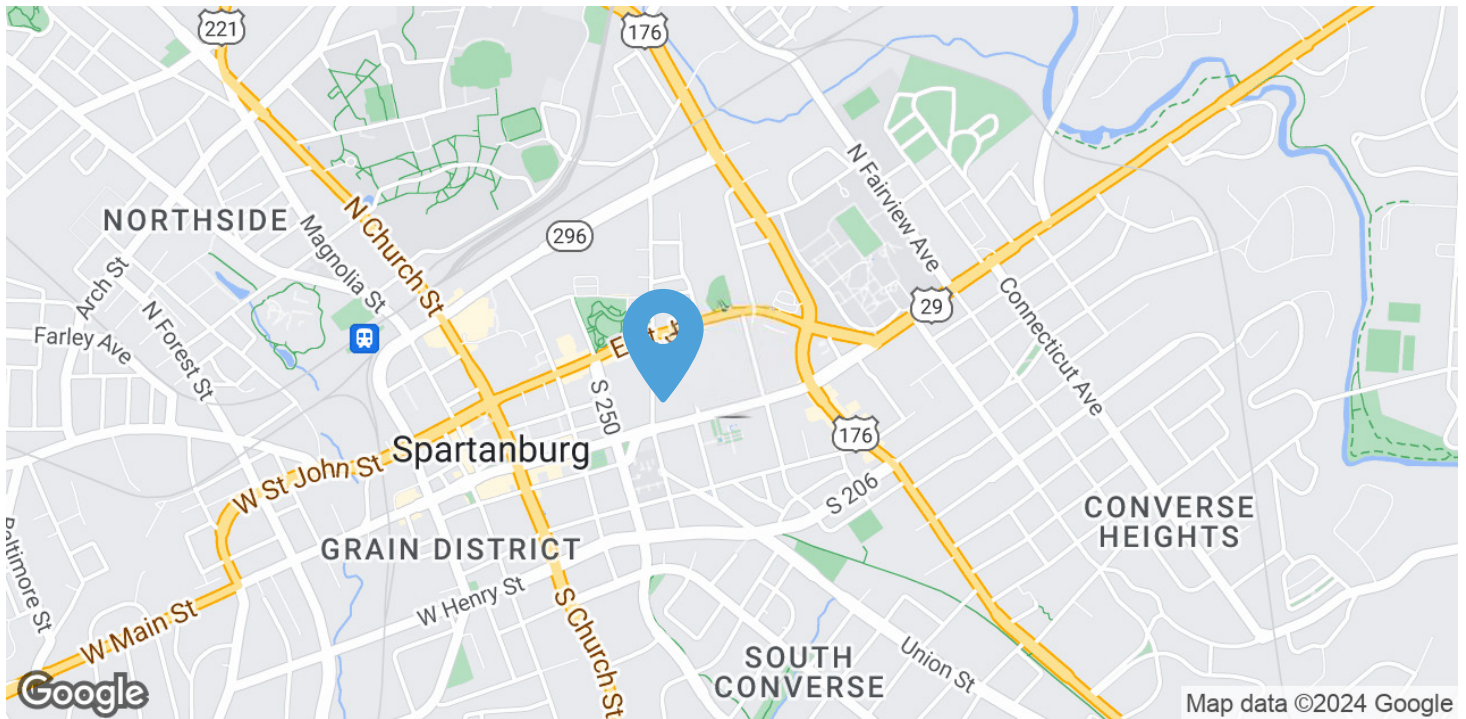


**KDS**  
**CAINE**  
COMMERCIAL REAL ESTATE

# LEASE

## MARY BLACK FOUNDATION BUILDING

349 E Main St Spartanburg, SC 29302



### OFFERING SUMMARY

Lease Rate:	\$25/RSF (Full Service)
Building Size:	+/-25,500 RSF
Suite 200 Available:	+/-3,189 RSF
Individual Office Available:	+/-280 RSF
Lot Size:	+/-0.99 Acres
Year Built:	1961
Renovated:	2006
Market:	Greenville/Spartanburg
Submarket:	Spartanburg CBD

### PROPERTY OVERVIEW

Office space for lease in Downtown Spartanburg

### PROPERTY HIGHLIGHTS

- 2 story office building located in Spartanburg's CBD
- Tenants include Mary Black Foundation, Strategic Spartanburg. & Raymond James & Associates
- Leed Certified
- Outdoor patio with garden and dining area available for Tenant use
- Monument sign
- 30 on-site surface parking spaces
- Utilities and janitorial services included
- Access to meeting room for up to 20 people (must be reserved in advance)
- Kitchen/break area
- 2022 Traffic Count: 11,900 VPD

---

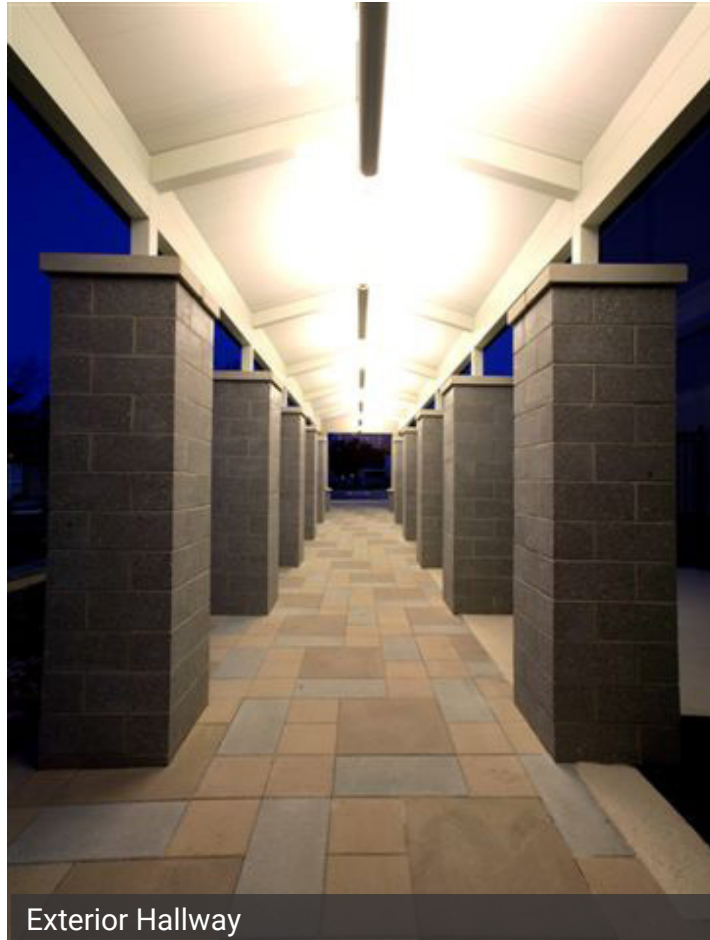
**Tim Satterfield**  
864-415-2373



# LEASE

## MARY BLACK FOUNDATION BUILDING

349 E Main St Spartanburg, SC 29302



Exterior Hallway



Interior Hallway

---

**Tim Satterfield**  
864-415-2373



# LEASE

## MARY BLACK FOUNDATION BUILDING

349 E Main St Spartanburg, SC 29302



Outdoor Patio



Outdoor Patio

---

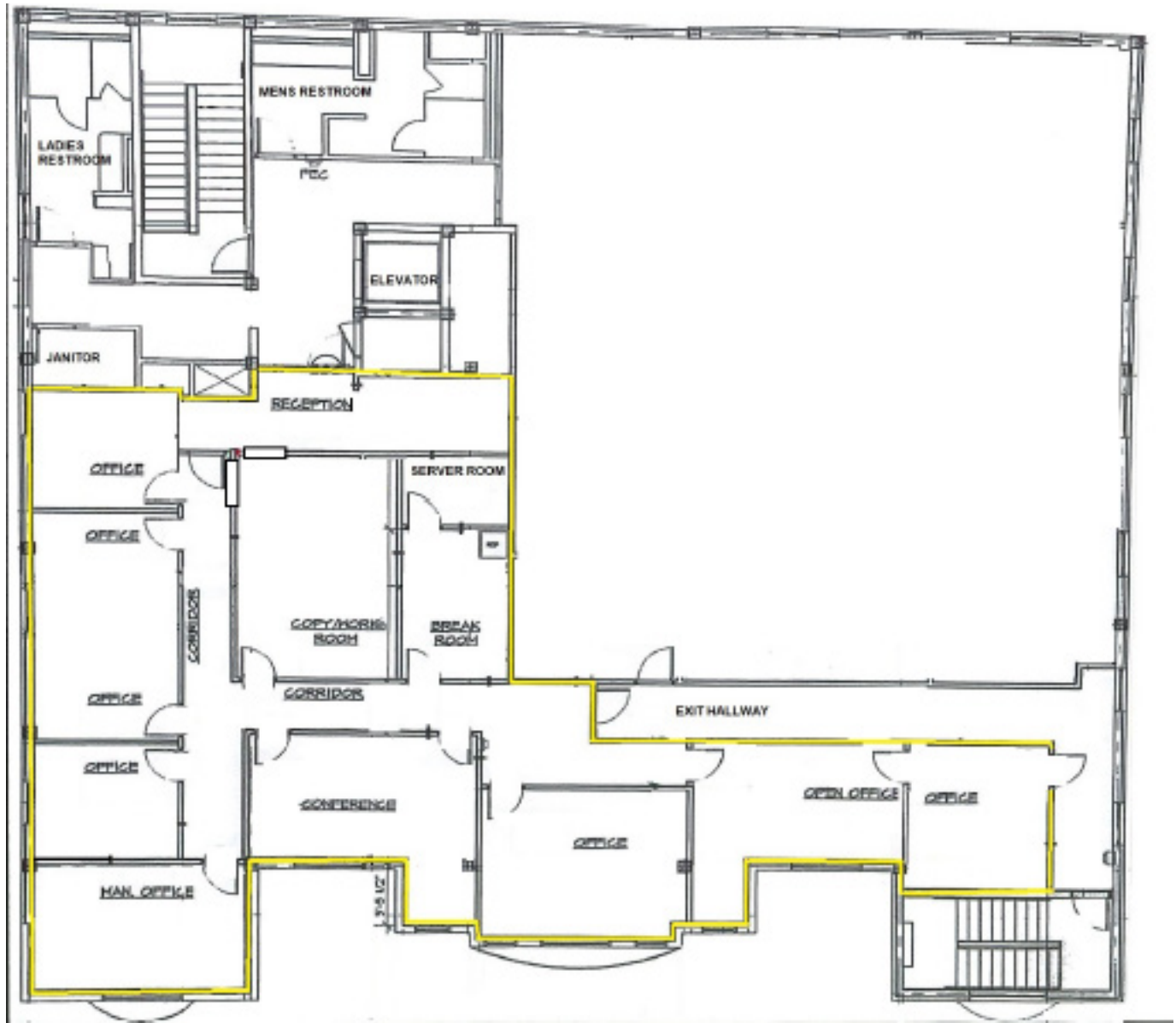
**Tim Satterfield**  
864-415-2373



# LEASE

## MARY BLACK FOUNDATION BUILDING

349 E Main St Spartanburg, SC 29302



Floor Plan - Suite 200

**Tim Satterfield**  
864-415-2373



# LEASE

## MARY BLACK FOUNDATION BUILDING

349 E Main St Spartanburg, SC 29302



Individual Office Space



Individual Office Space

---

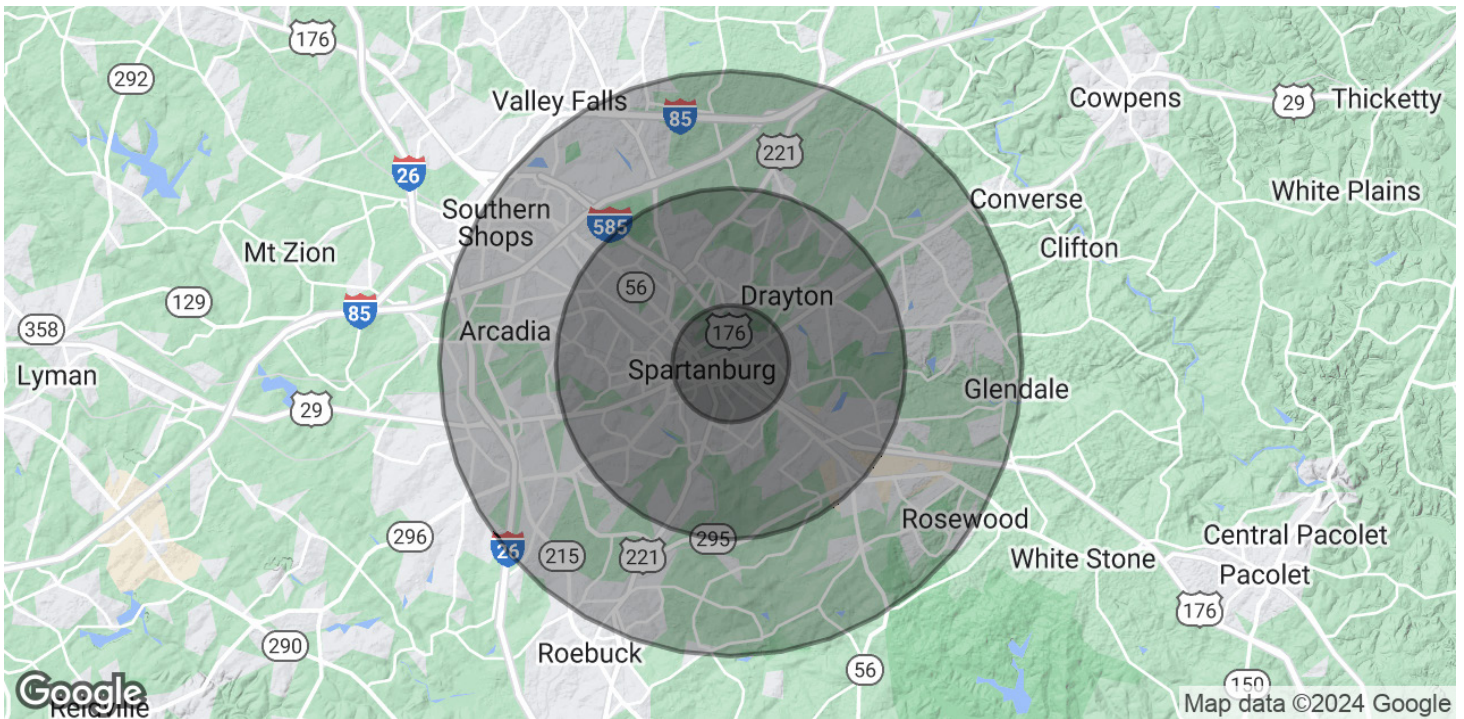
**Tim Satterfield**  
864-415-2373



# LEASE

## MARY BLACK FOUNDATION BUILDING

349 E Main St Spartanburg, SC 29302



POPULATION	1 MILE	3 MILES	5 MILES
Total Population	5,811	43,616	91,613
Average Age	37.6	37.5	36.5
Average Age (Male)	35.4	35.6	34.9
Average Age (Female)	38.5	39.8	38.7

HOUSEHOLDS & INCOME	1 MILE	3 MILES	5 MILES
Total Households	2,797	20,426	40,804
# of Persons per HH	2.1	2.1	2.2
Average HH Income	\$52,613	\$49,409	\$52,007
Average House Value	\$137,415	\$126,141	\$133,034

\* Demographic data derived from 2020 ACS - US Census

**Tim Satterfield**  
864-415-2373

