

## Land Sweet Gum Valley Rd Travelers Rest, SC 29690

+/-16.28 Acres for Sale Near Highway 25

<b>Property Type</b>	Land
<b>Status</b>	For Sale
<b>Sale Price</b>	\$244,200
<b>Acreage</b>	+/- 16.28 Acre(s)
<b>Zoning</b>	Unzoned
<b>County</b>	Greenville
<b>Tax Map</b>	06620601007.00, 007.03, 007.04, 007.06, 00.800

### AGENT CONTACT



PETE BRETT, CCIM

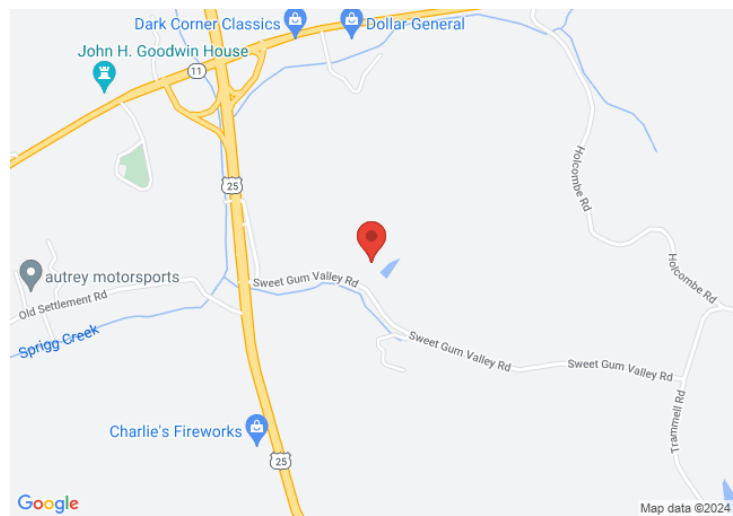
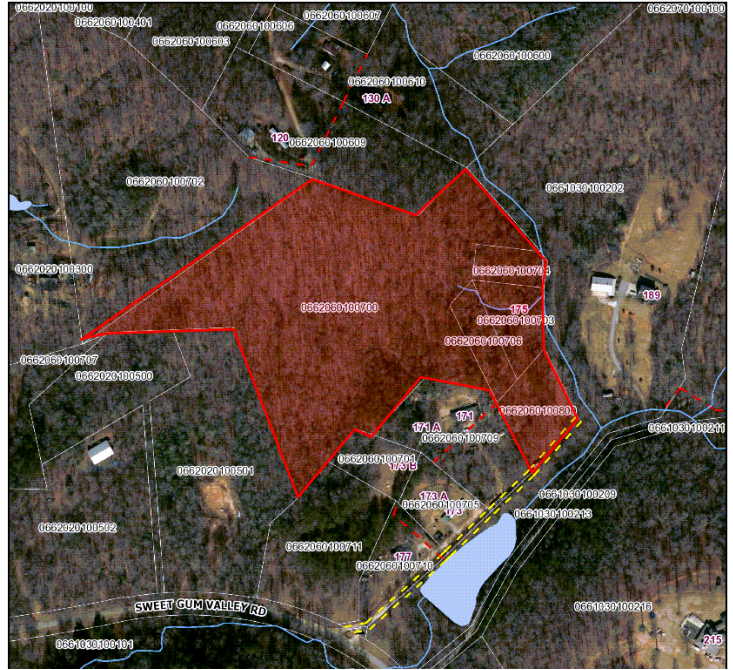
[pbrett@kdscaine.com](mailto:pbrett@kdscaine.com)

[O: 864-242-4200](tel:864-242-4200)

[M:864-414-6796](tel:864-414-6796)

### PROPERTY FEATURES

- Discover a serene escape with this stunning 16-acre wooded property, ideally situated 10 miles north of Travelers Rest, South Carolina. Nestled at the intersection of Highway 11 and Highway 25, this picturesque parcel offers the perfect blend of privacy and convenience. The land features lush, mature trees and gently rolling terrain, creating an idyllic setting for your dream home, a private retreat, or a recreational haven. Enjoy easy access to nearby amenities, scenic byways, and the natural beauty of the Blue Ridge Mountains. This rare opportunity to own a piece of rural paradise won't last long. Contact us today to learn more!
- Utilities Available at Site: Duke Energy, Water NA, Sewer NA, Gas NA
- \$15,000 per Acre Based on Purchaser's Final Survey



*All information contained herein has been obtained from sources deemed reliable, but we cannot guarantee it. It is also subject to change without notice.*

340 Rocky Slope Rd., Suite 302, Greenville, SC 29607

📞 864-242-4200 · [kdscaine.com](http://kdscaine.com) · ✉ [admin@kdscaine.com](mailto:admin@kdscaine.com)