

# LEASE

CONTEMPORARY OFFICE SPACE  
ONE BLOCK WEST OF MAIN STREET

AVAILABLE SPACE  
4,200 SF

7 S. Laurens St.  
Suite 200  
Greenville, SC 29601



Rickey Heaton  
864.350.0323

Larry Webb  
864.238.6673

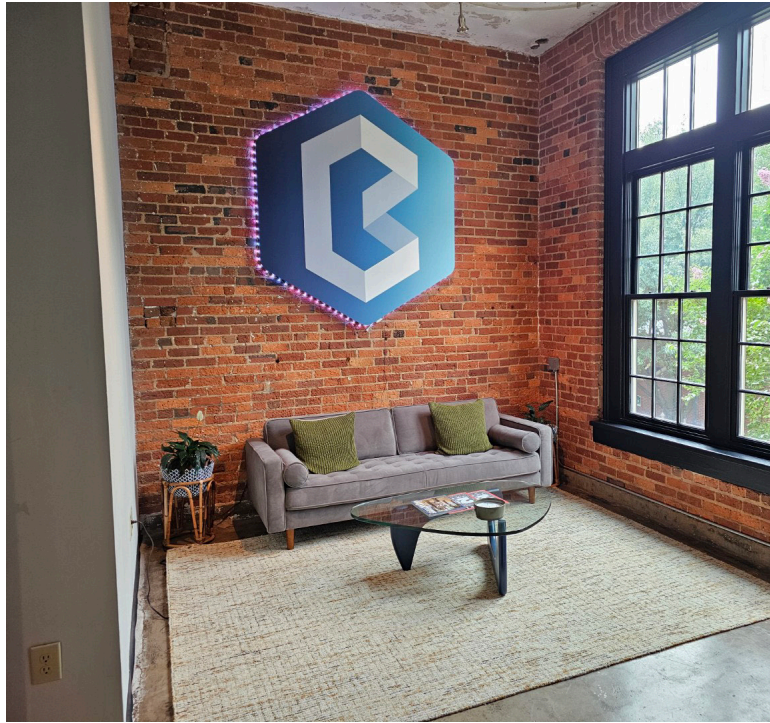
KDS   
**CAINE**  
COMMERCIAL REAL ESTATE

All information deemed reliable, but not guaranteed.

# LEASE

7 S. Laurens St. Suite 200

Greenville, SC 29601



## OFFERING SUMMARY

Available SF	4,200 SF
Lease Rate	\$20/SF w/ OPEX estimated at \$4.72/SF
Parking	Public
Building Size	12,600 SF

## PROPERTY HIGHLIGHTS

- Located between Washinton & McBee - One block west of Main Street
- Reception area, Small conference room, Large conference room, Kitchenette, & 10 offices
- Office space great for creatives, tech companies, design firms, etc.
- Direct elevator access to second floor - Suite 200

**Rickey Heaton**  
**864.350.0323**

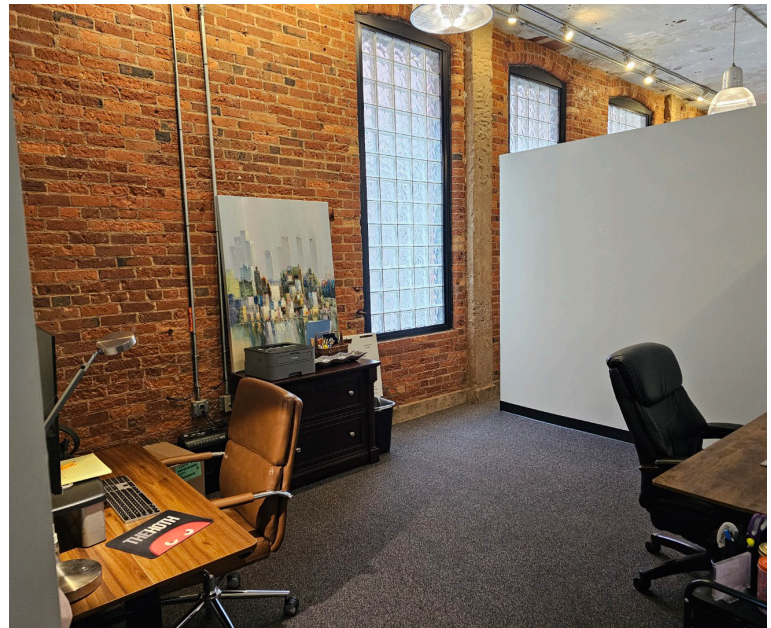
**Larry Webb**  
**864.238.6673**



# LEASE

7 S. Laurens St. Suite 200

Greenville, SC 29601



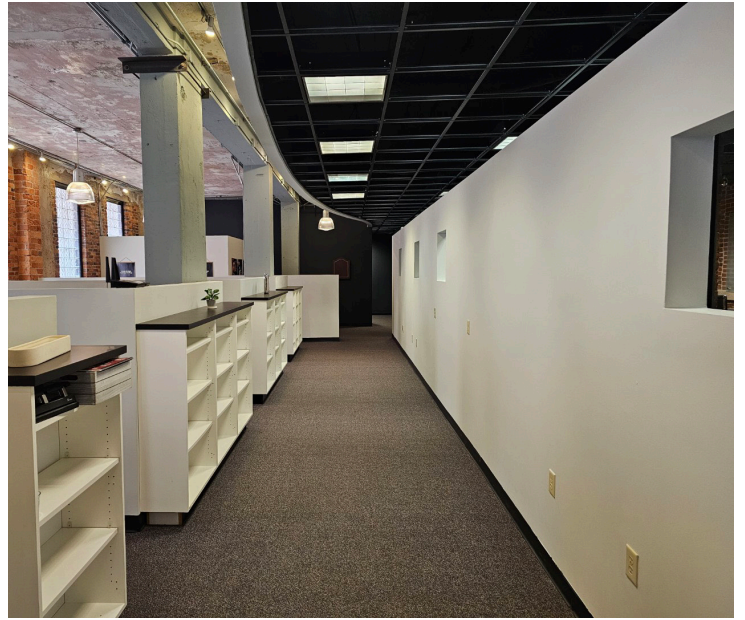
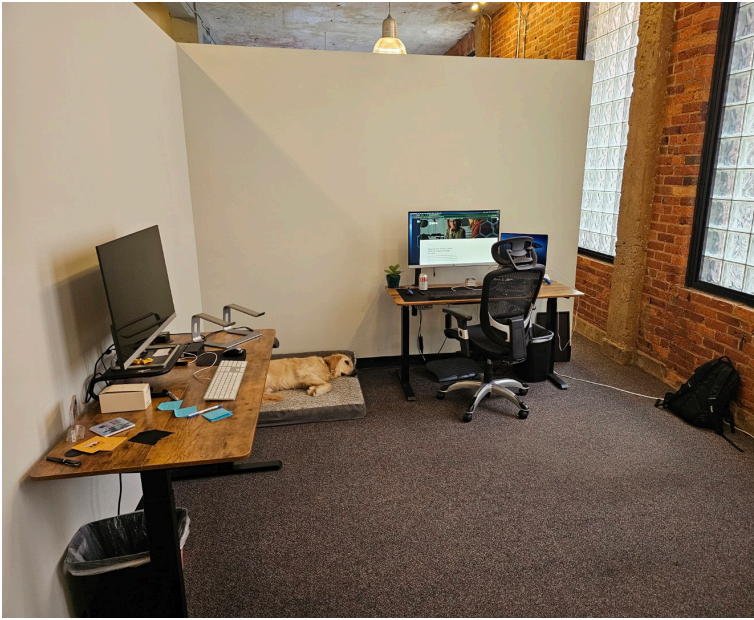
**Rickey Heaton**  
**864.350.0323**

**Larry Webb**  
**864.238.6673**



All information deemed reliable, but not guaranteed.

# PHOTOS



**Rickey Heaton**  
**864.350.0323**

**Larry Webb**  
**864.238.6673**

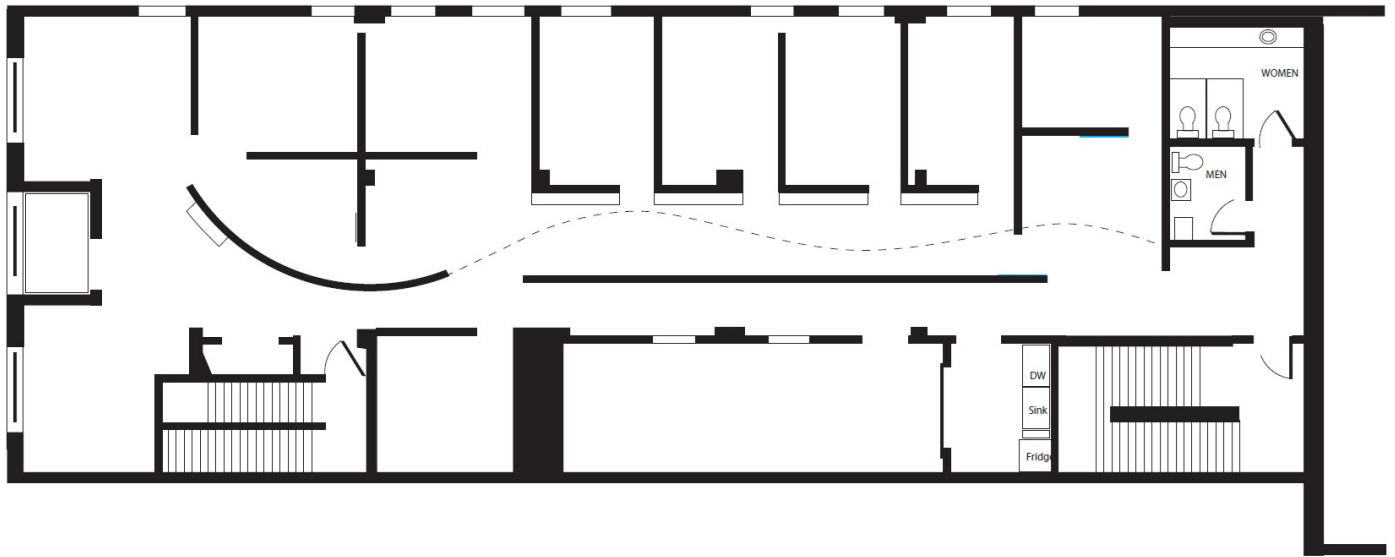


All information deemed reliable, but not guaranteed.

# LEASE

7 S. Laurens St. Suite 200

Greenville, SC 29601



## LEASE INFORMATION

Lease Type:	NNN	Lease Term:	Negotiable
Total Space:	4,200 SF	Lease Rate:	\$20/SF with OPEX estimated at \$4.72/SF

**Rickey Heaton**  
**864.350.0323**

**Larry Webb**  
**864.238.6673**

