

FOR SALE

JONES ROAD

Spartanburg, SC 29307



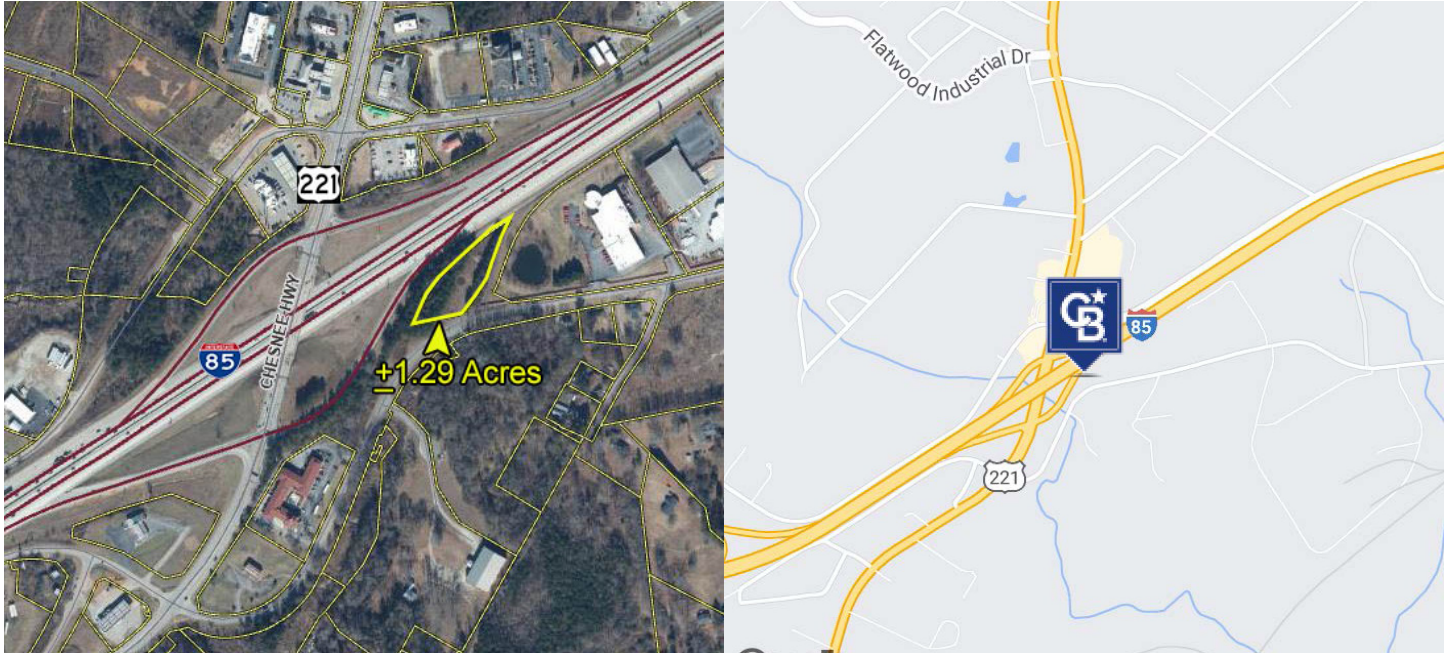
TIM SATTERFIELD
864.342.2322

All information deemed reliable, but not guaranteed.



COLDWELL BANKER
COMMERCIAL
CAINE

DETAILS



OFFERING SUMMARY

- Sale Price: \$75,000
- Lot Size: +/- 1.29 Acres
- Price/Acre: \$58,140
- Land Use: Qualified Agricultural Commercial Vacant (4AGT)
- Market : Greenville/Spartanburg

PROPERTY OVERVIEW

+/- 1.29 Acres For Sale

PROPERTY HIGHLIGHTS

- Utilities: Public Water
- 2022 Traffic Counts: 72,500 VPD (I-85 at US 221), 20,900 VPD (US 221 to I-85)
- Spartanburg County Tax Map No. 7-02-00-061.00

TIM SATTERFIELD
864.342.2322

All information deemed reliable, but not guaranteed.



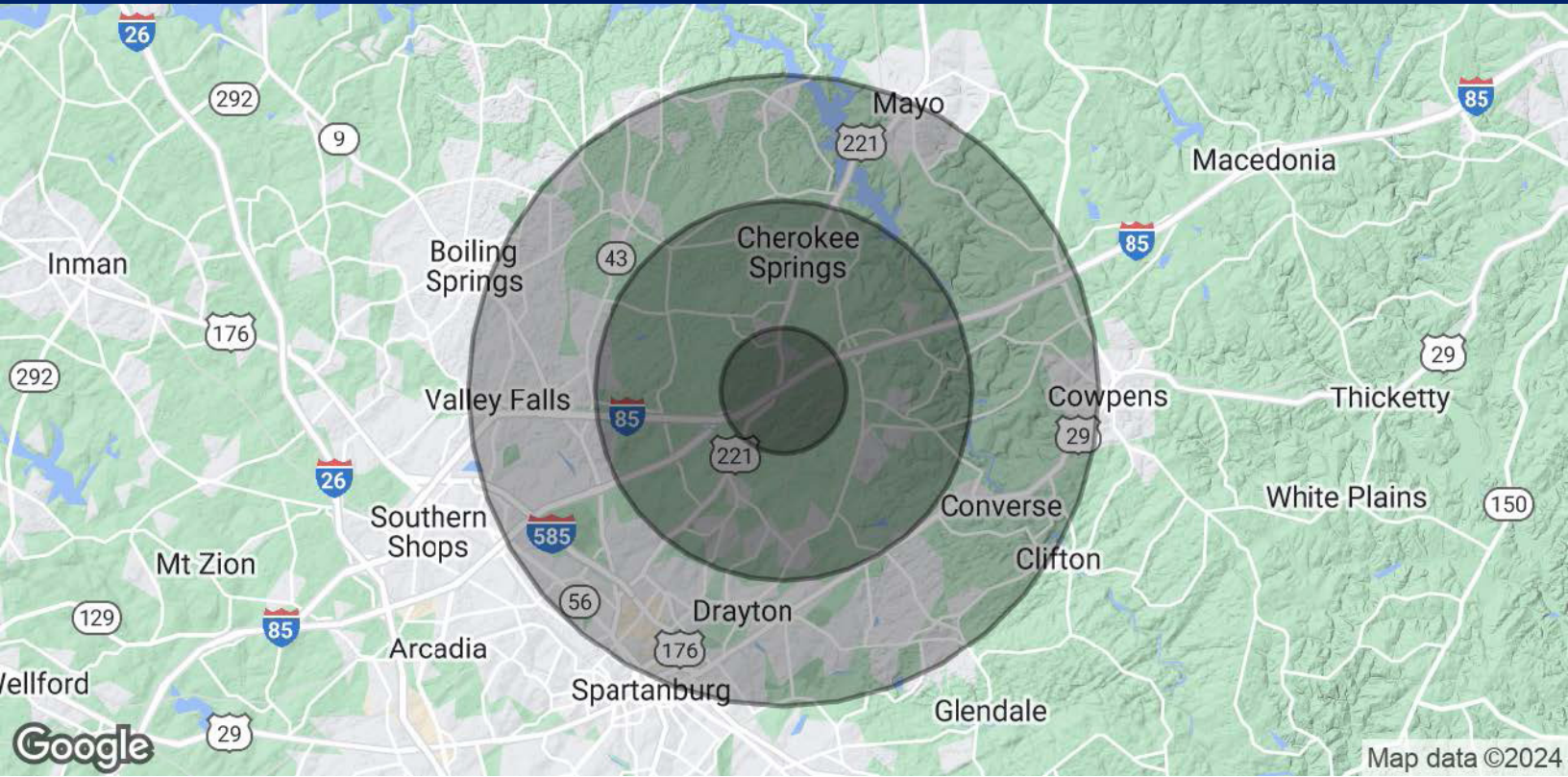
Map data ©2024 Google Imagery ©2024 Airbus, Maxar Technologies, U.S. Geological Survey, USDA/FPAC/GEO

TIM SATTERFIELD
864.342.2322

All information deemed reliable, but not guaranteed.



POPULATION & ECONOMIC DATA



POPULATION	1 MILE	3 MILES	5 MILES
Total Population	752	11,578	50,885
Average Age	48.9	41.7	38.3
Average Age (Male)	49.9	40.6	37.8
Average Age (Female)	52.2	42.8	39.7

HOUSEHOLDS & INCOME	1 MILE	3 MILES	5 MILES
Total Households	338	5,204	22,031
Number of Persons Per Household	2.2	2.2	2.3
Average Household Income	\$60,645	\$52,997	\$59,731
Average House Value	\$132,803	\$138,380	\$199,095

Demographic data derived from 2020 ACS - US Census

TIM SATTERFIELD
864.342.2322

All information deemed reliable, but not guaranteed.



THE UPSTATE

LOCATION, LOCATION, LOCATION

1,518,710 People

10 Upstate SC Counties

7,248,408 People

100 Mile Range: Asheville, Atlanta, Charlotte, Columbia, Knoxville

32,431,942 People

250 Mile Range: Birmingham, Charleston, Chattanooga, Greensboro, Lexington, Raleigh

100,873,075 People

500 Mile Range: Baltimore, Cincinnati, Indianapolis, Louisville, Memphis, Pittsburgh, St. Louis



A CRITICAL MANUFACTURING HUB



SOUTH CAROLINA IS OPEN FOR BUSINESS

#1

State for Manufacturing in 2022
Site Selection Group

#2

Fastest Growing State
in the Eastern US
Site Selection Group

#3

State for Doing Business
Area Development



COLDWELL BANKER
COMMERCIAL
CAINE

TIM SATTERFIELD
864.342.2322
tsatterfield@cbccaine.com