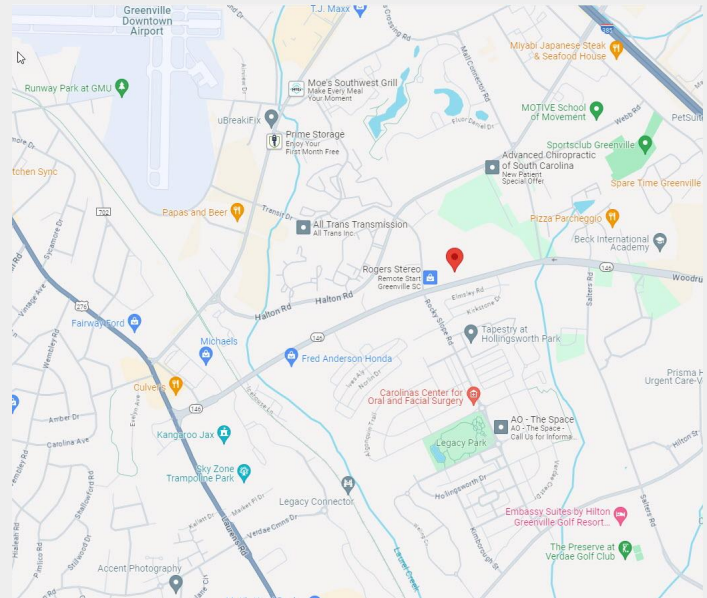


Fully Conditioned Flex Office Building in Prime Location with Income



Offering Summary

Sale Price	\$1,550,000
Square Feet	+/- 10,800 SF
Acreage	+/- 1.5 AC
Type	Flex Office
Tax Map #	0260000101507
Zoning	S-1 Greenville County
Net Income	\$100,000 / Year



Gary Kirby | 864-650-5556 | gary@kdsproperties.com

Property Features

Centrally located office building between Laurens Road, Haywood Road, Woodruff Road, and I-385
Close proximity to Jervey Eye, Verdae Development/Hollingsworth Park, New County and City Offices, Patewood Medical, and the Haywood Mall
Ample Private Parking
Zoned S-1 - Greenville County
100% HVAC
Income investment opportunity with two stabilized office tenants



Gary Kirby | 864-650-5556 | gary@kdsproperties.com



Gary Kirby | 864-650-5556 | gary@kdsproperties.com

kdsproperties.com • 340 Rocky Slope Rd. Suite 302, Greenville, SC 29607 • 864-242-4200

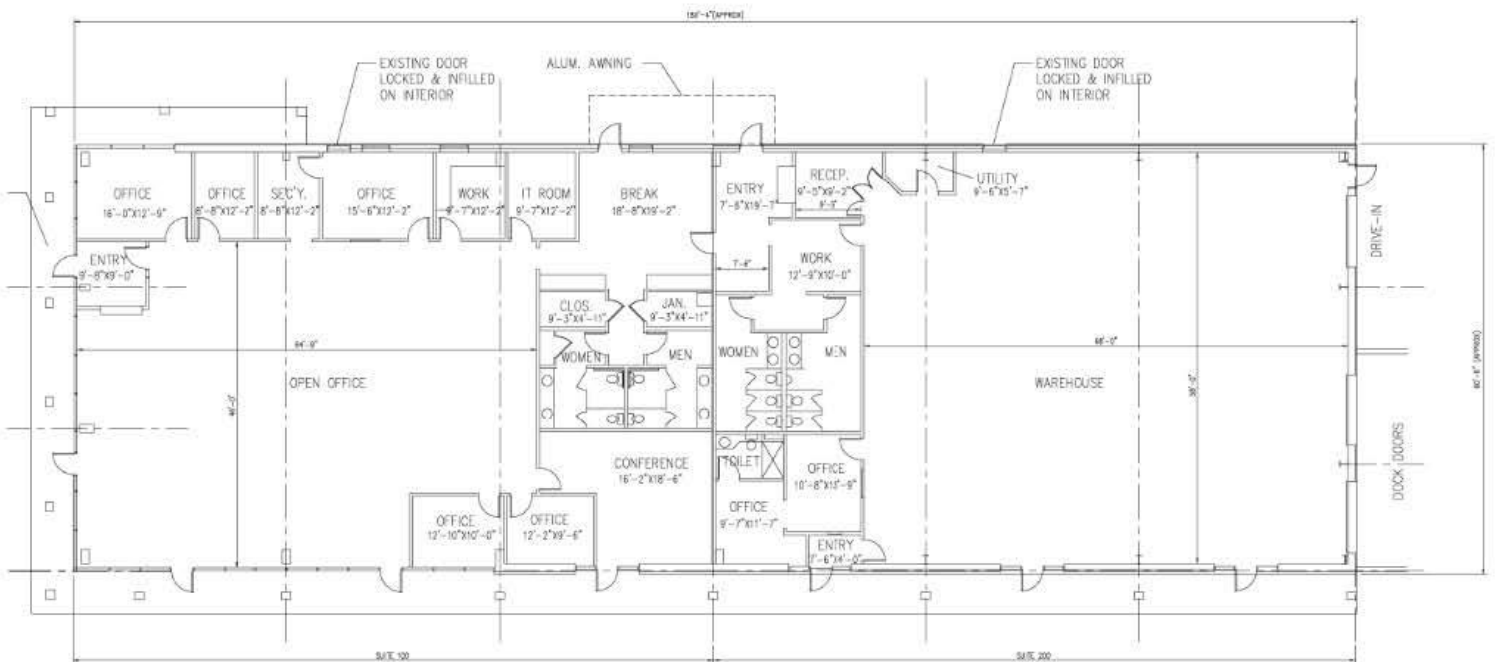
Information contained herein has been obtained from sources deemed reliable, but we cannot guarantee it.
All property information is subject to change or withdrawal without notice.



Gary Kirby | 864-650-5556 | gary@kdsproperties.com



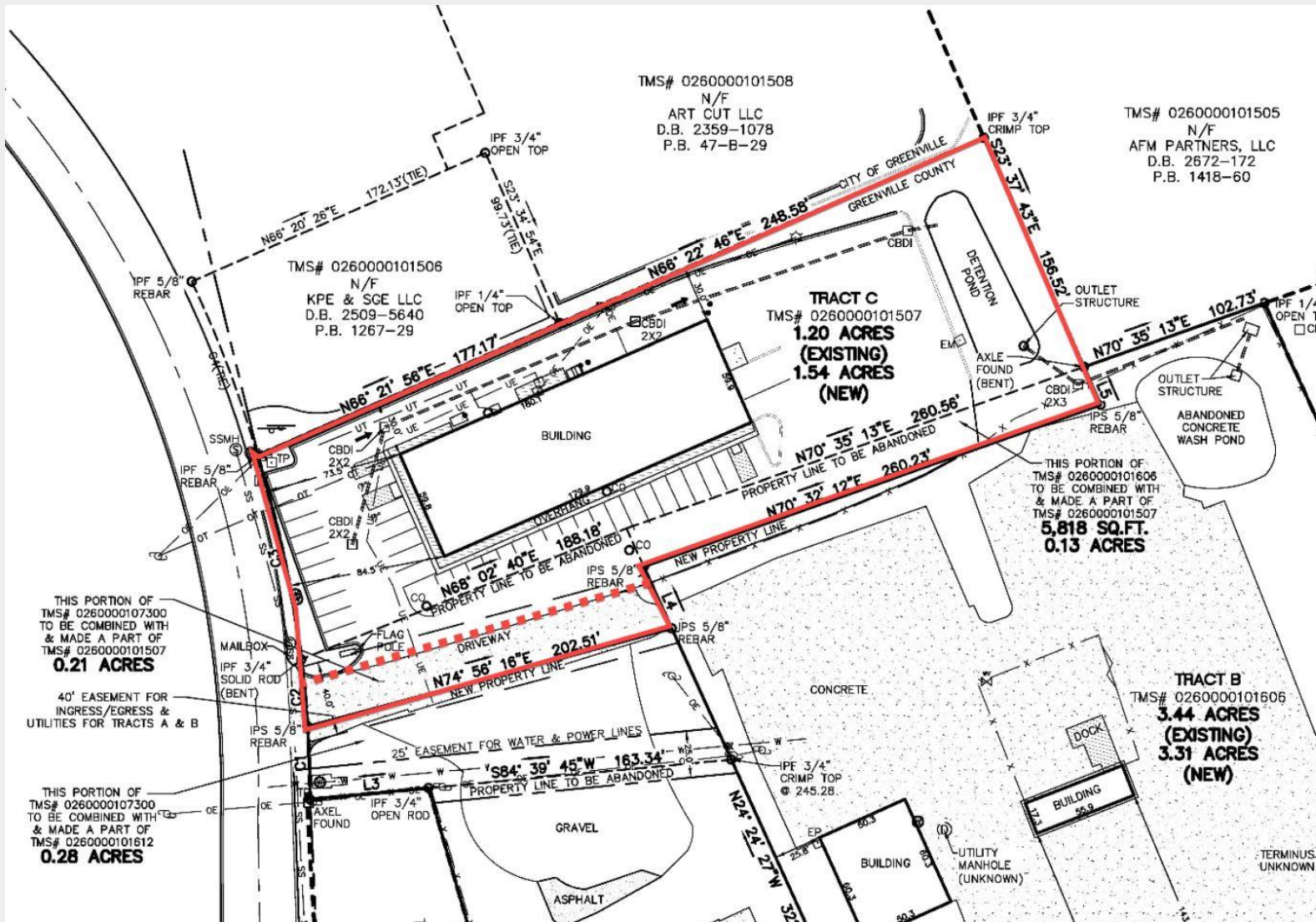
Gary Kirby | 864-650-5556 | gary@kdsproperties.com



FLOOR PLAN

AREA DATA

Gary Kirby | 864-650-5556 | gary@kdsproperties.com



Gary Kirby
 864-650-5556
 Gary@kdsproperties.com