

11 Professionals Circle Seneca, SC 29678

Great Opportunity for Owner-Occupied
Medical or Professional

Property Type	Office
Status	For Sale
Sale Price	\$459,000
Acreage	+/- .16 Acre(s)
Square Feet	+/- 2,580 Square Feet
Zoning	NC
County	Oconee
Tax Map	5201701057



AGENT CONTACT



RICKEY HEATON

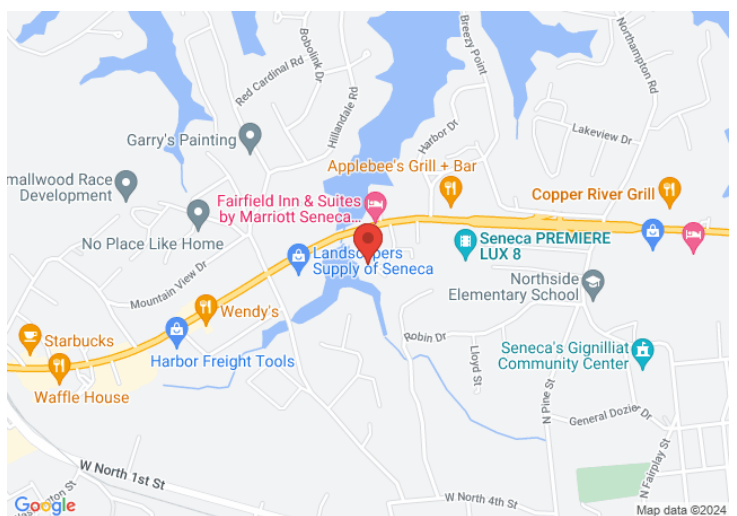
rickey@kdsproperties.com

O: 864-242-4200 ext. 216

M: 864-350-0323

PROPERTY FEATURES

- Former Dental Office
- 7 Exam rooms, 2 executive offices with restrooms, 2 work rooms, kitchen/lounge, washer/dryer room, and 2 restrooms
- Located in The Commons, a professional park off US Hwy 123
- Signage on Hwy 123 and at the property



*All information contained herein has been obtained from sources deemed reliable,
but we cannot guarantee it. It is also subject to change without notice.*

340 Rocky Slope Road, Suite 302, Greenville, SC 29607

📞 864-242-4200 • kdsproperties.com • ✉ admin@kdsproperties.com

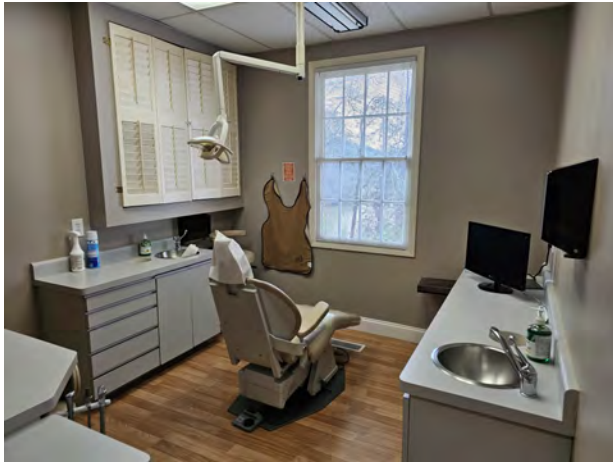


All information contained herein has been obtained from sources deemed reliable, but we cannot guarantee it. It is also subject to change without notice.

340 Rocky Slope Road, Suite 302, Greenville, SC 29607

☎ 864-242-4200 • kdsproperties.com • ✉ admin@kdsproperties.com

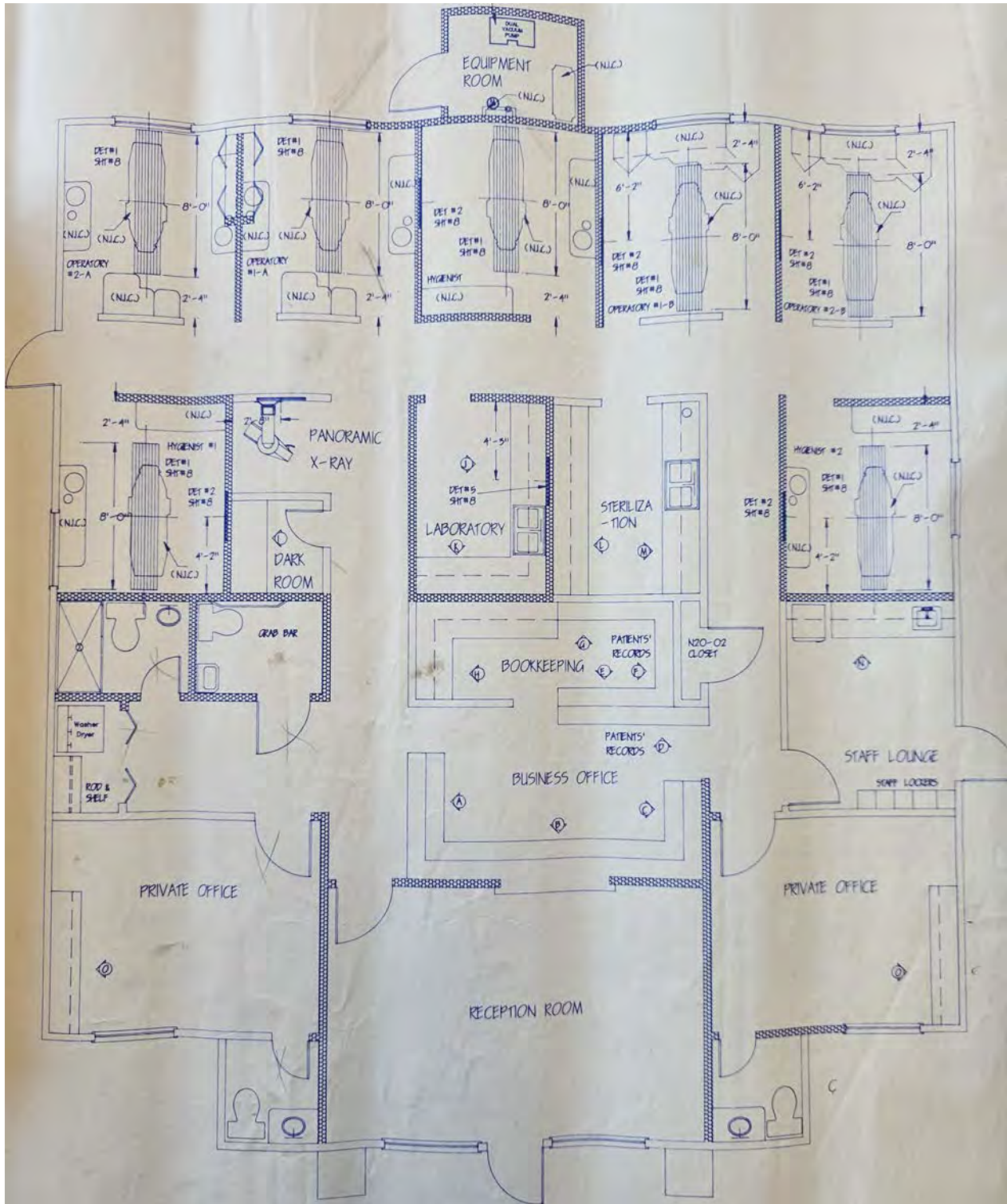
PHOTOS



All information contained herein has been obtained from sources deemed reliable, but we cannot guarantee it. It is also subject to change without notice.

340 Rocky Slope Road, Suite 302, Greenville, SC 29607

☎ 864-242-4200 • kdsproperties.com • ✉ admin@kdsproperties.com



All information contained herein has been obtained from sources deemed reliable,
but we cannot guarantee it. It is also subject to change without notice.

340 Rocky Slope Road, Suite 302, Greenville, SC 29607

☎ 864-242-4200 • kdsproperties.com • ✉ admin@kdsproperties.com