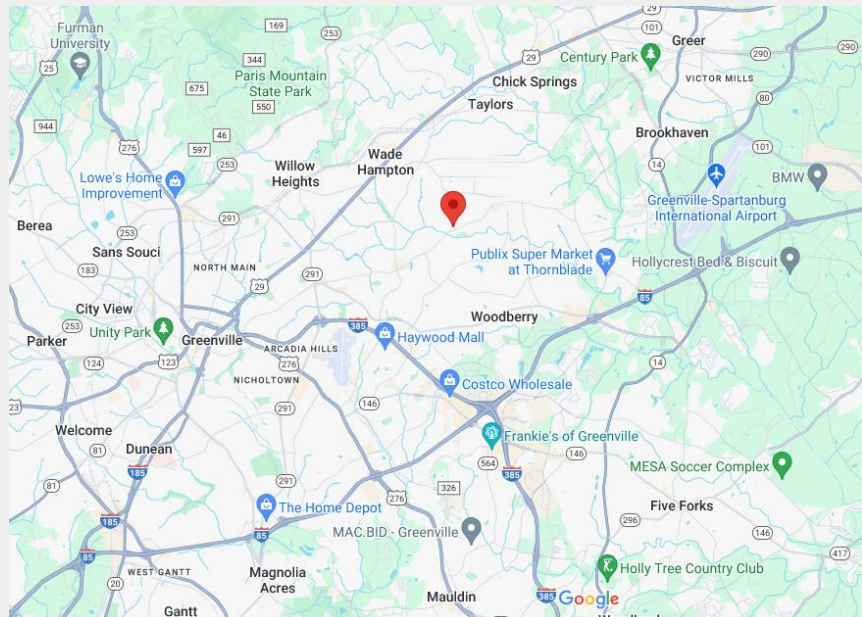


Office/Medical on the Eastside of Greenville



## Offering Summary

|                    |               |
|--------------------|---------------|
| <b>Price</b>       | \$637,000     |
| <b>Square Feet</b> | ±3,703 SF     |
| <b>County</b>      | Greenville    |
| <b>Tax Map #</b>   | 0538010102509 |



**Brad Doyle** · 864.237.8458 · [bdoyle@kdscaine.com](mailto:bdoyle@kdscaine.com)



**Property Highlights**

Free-standing office/medical building

Immaculately maintained by original owner | Updated in 2019

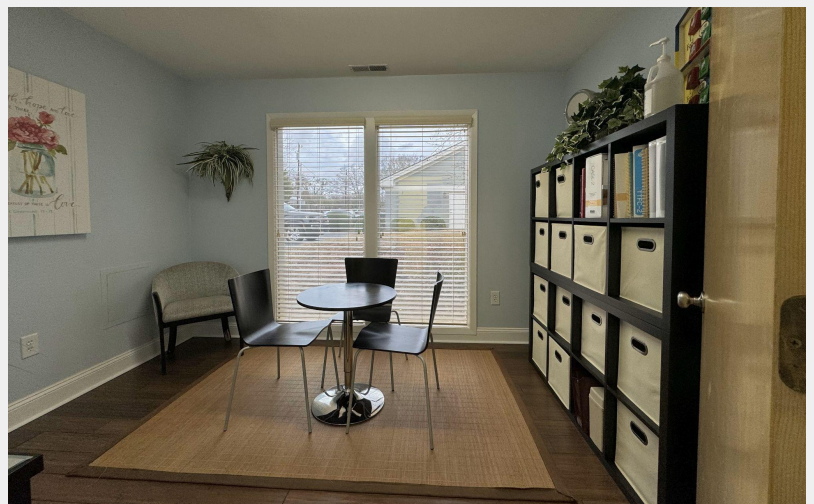
3,703 SF (2,330 SF on main floor & 1,373 SF on second floor)

Efficient layout, easily subdividable by floor with split foyer

Great location on the Eastside of Greenville outside of city limits

Established, vibrant, professional office park setting

Employee entrance in rear | Ample parking in front and rear



**Brad Doyle** · 864.237.8458 · [bdoyle@kdscaine.com](mailto:bdoyle@kdscaine.com)

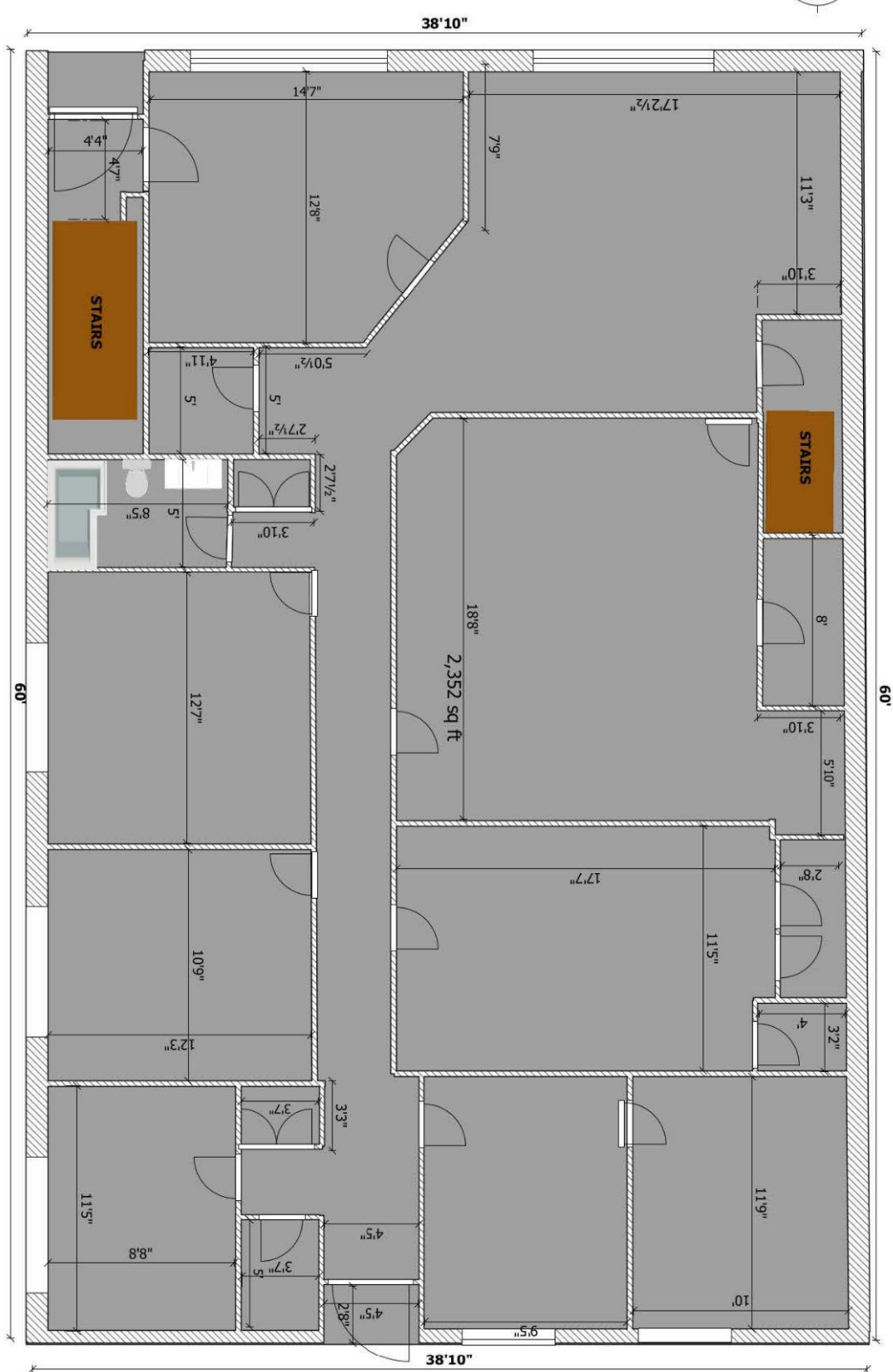




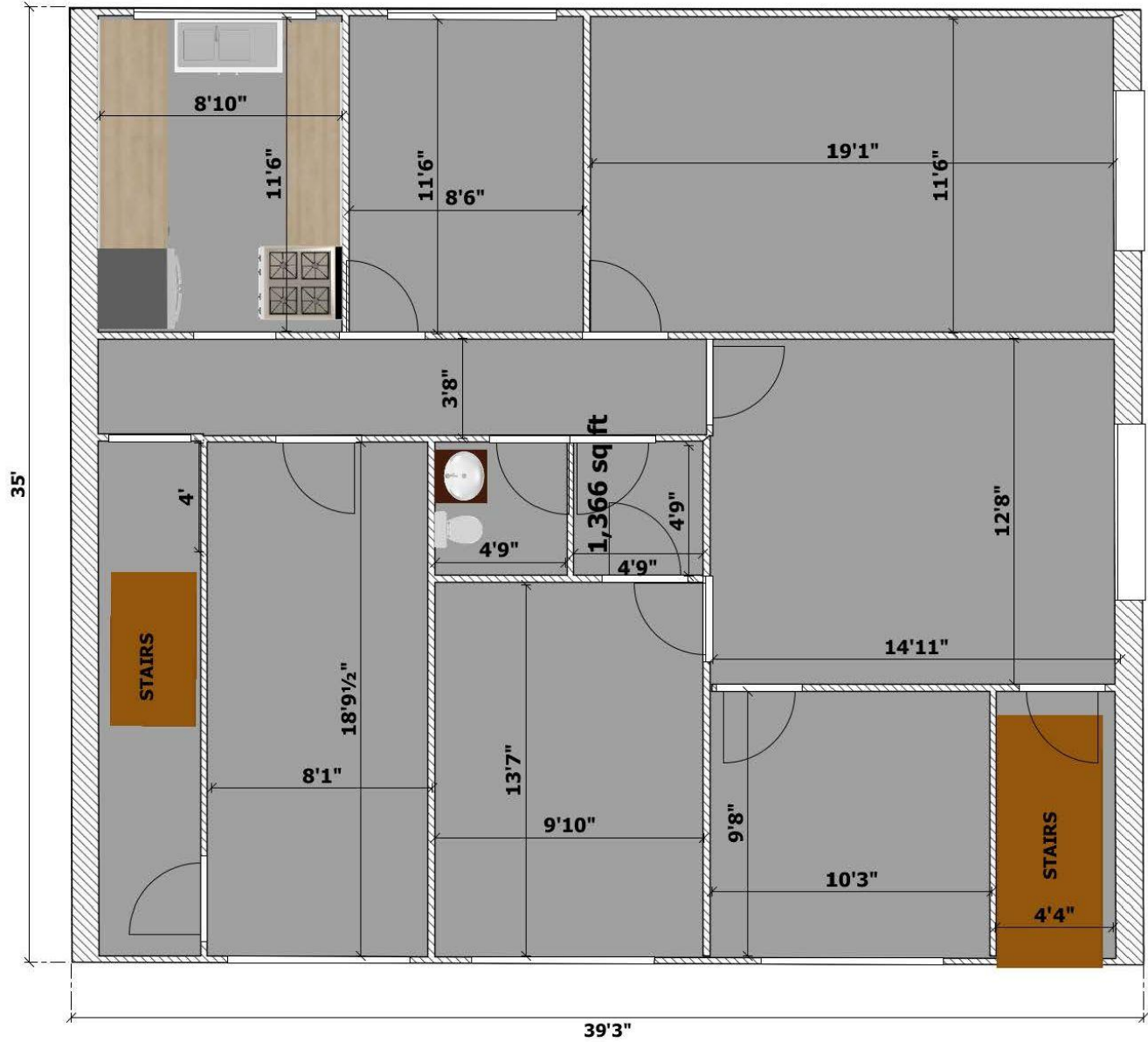
**Brad Doyle** · 864.237.8458 · [bdoyle@kdscaine.com](mailto:bdoyle@kdscaine.com)

**kdscaine.com** · 340 Rocky Slope Rd. Suite 302, Greenville, SC 29607 · 864-242-4200

Information contained herein has been obtained from sources deemed reliable, but we cannot guarantee it.  
All property information is subject to change or withdrawal without notice.



**Brad Doyle** • 864.237.8458 • [bdoyle@kdscaine.com](mailto:bdoyle@kdscaine.com)



**Brad Doyle** · 864.237.8458 · [bdoyle@kdscaine.com](mailto:bdoyle@kdscaine.com)