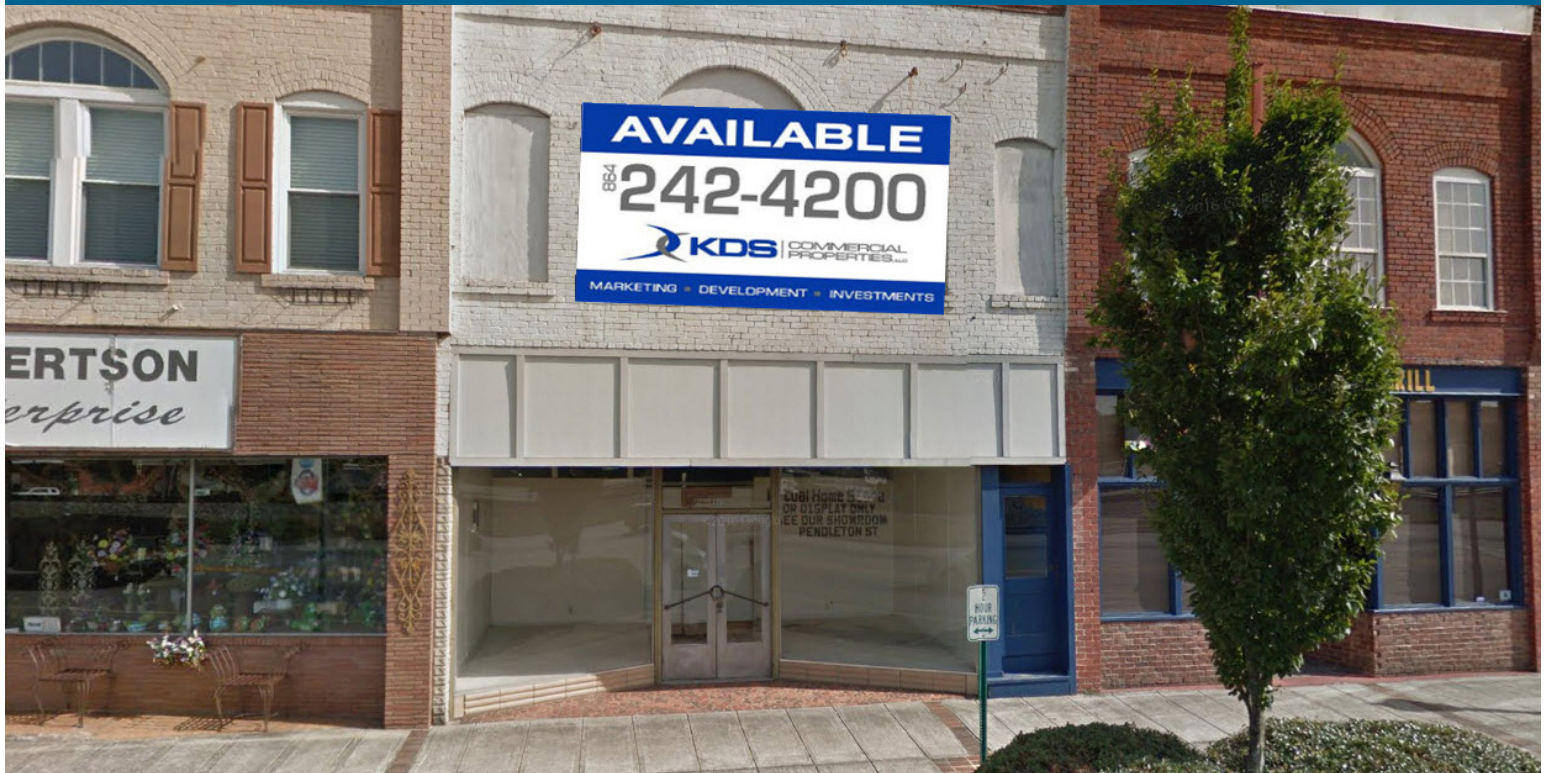


RETAIL & LIVING SPACE

FORMER MUTUAL HOME STORES
CORE COMMERCIAL DISTRICT IN EASLEY



116 EAST MAIN STREET, EASLEY, SC 29640

PROPERTY SUMMARY

- "Old showroom & Storage" for Mutual Home Stores
- 1st Floor @ 3,209sf
2nd Floor @ 3,262sf
- Shell condition – no partitions, bathrooms or HVAC
- Heart of Downtown Easley
- Ideal redevelopment opportunity with
1st level retail & 2nd level living
- Includes unfinished basement area

SALE PRICE:

\$179,000

SQ FT:

±6,472

ACREAGE:

±0.72

PROPERTY ID:

4873

[CLICK HERE FOR DETAILED LISTING INFORMATION](#)

WWW.KDSPROPERTIES.COM

Information contained herein has been obtained from sources deemed reliable, but we cannot guarantee it. All property information is subject to change or withdrawal without notice.



BOBBY MILLER, CCIM

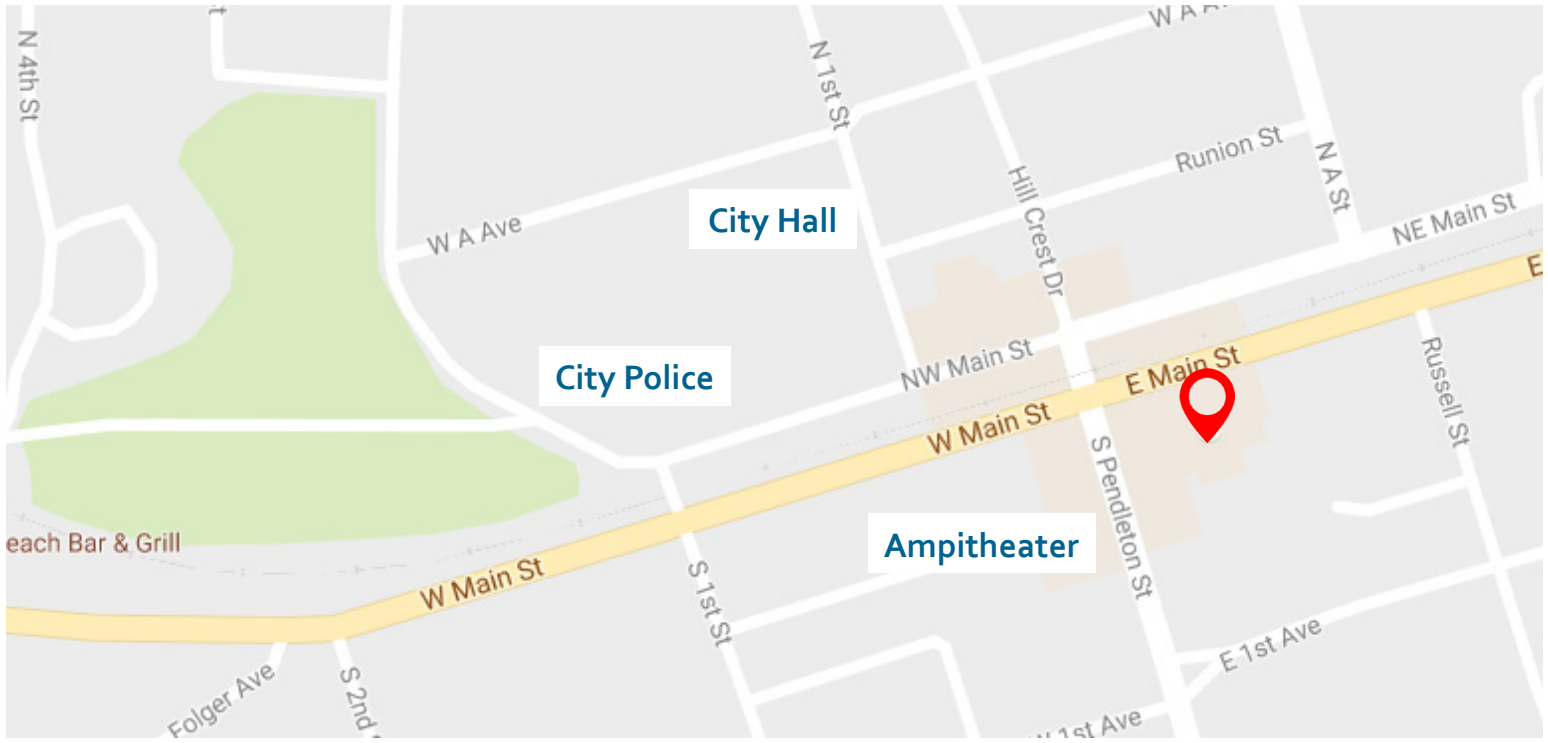
864.242.4200 x209 | bobby@kdsproperties.com

MARK RATCHFORD, MAI

864.242.4200 x211 | mratchford@kdsproperties.com

340 ROCKY SLOPE ROAD, SUITE 302, GREENVILLE, SC 29607

MAP



Information contained herein has been obtained from sources deemed reliable, but we cannot guarantee it. All property information is subject to change or withdrawal without notice.

EXTERIOR PHOTOS



Information contained herein has been obtained from sources deemed reliable, but we cannot guarantee it. All property information is subject to change or withdrawal without notice.

INTERIOR PHOTOS



Information contained herein has been obtained from sources deemed reliable, but we cannot guarantee it. All property information is subject to change or withdrawal without notice.