

Store Rd. and Rice Rd. Easley, SC 29640

Located in an Opportunity Zone

Property Type	Land
Status	For Sale
Acreage	+/- 265 Acre(s)
Zoning	Unzoned
County	Greenville

AGENT CONTACT



SAMMY DUBOSE

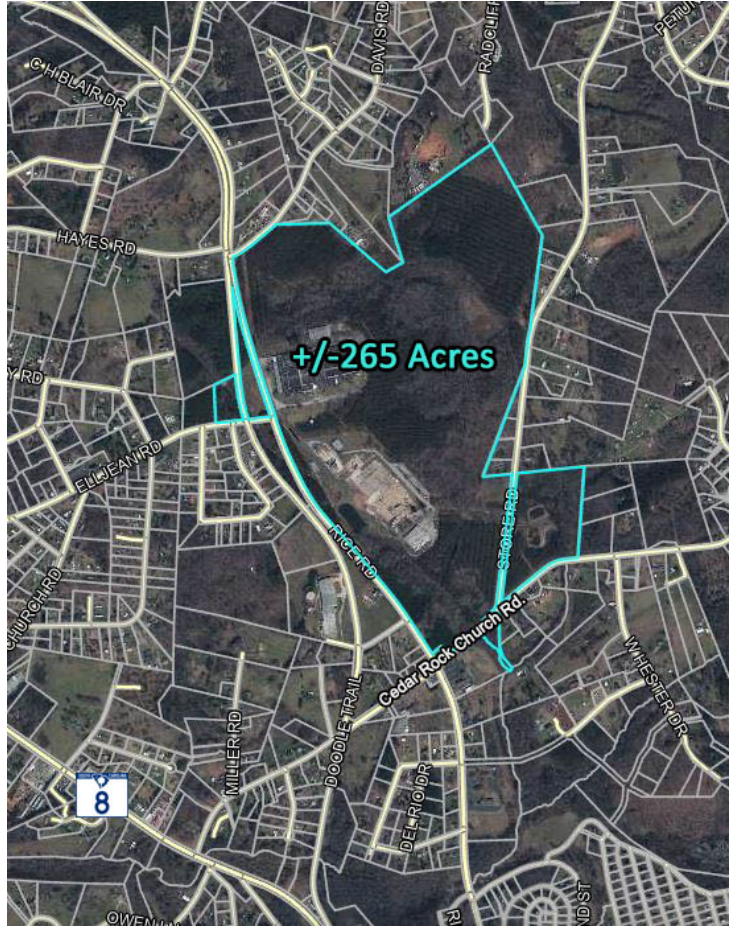
sdubose@kdscaine.com

O: 864-242-4200

M: 864-430-3008

PROPERTY FEATURES

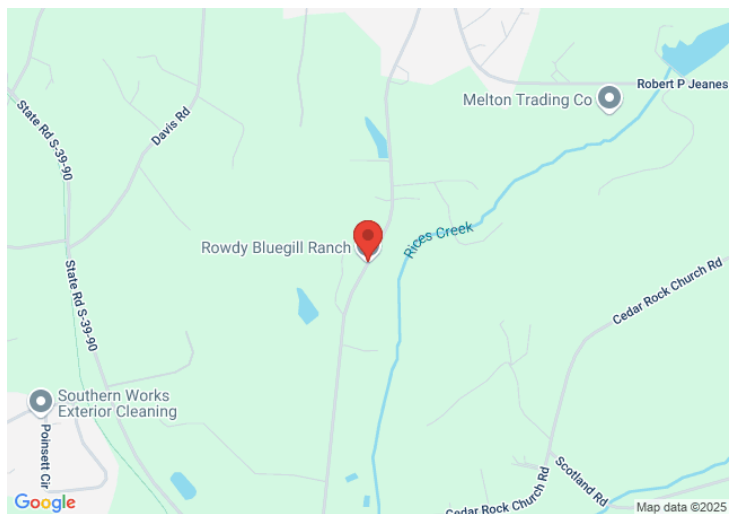
- Located in an Opportunity Zone
- Adjacent to the Doodle Trail
- Utilities Available
- Owner will Consider Subdividing



*All information contained herein has been obtained from sources deemed reliable,
but we cannot guarantee it. It is also subject to change without notice.*

340 Rocky Slope Rd., Suite 302, Greenville, SC 29607

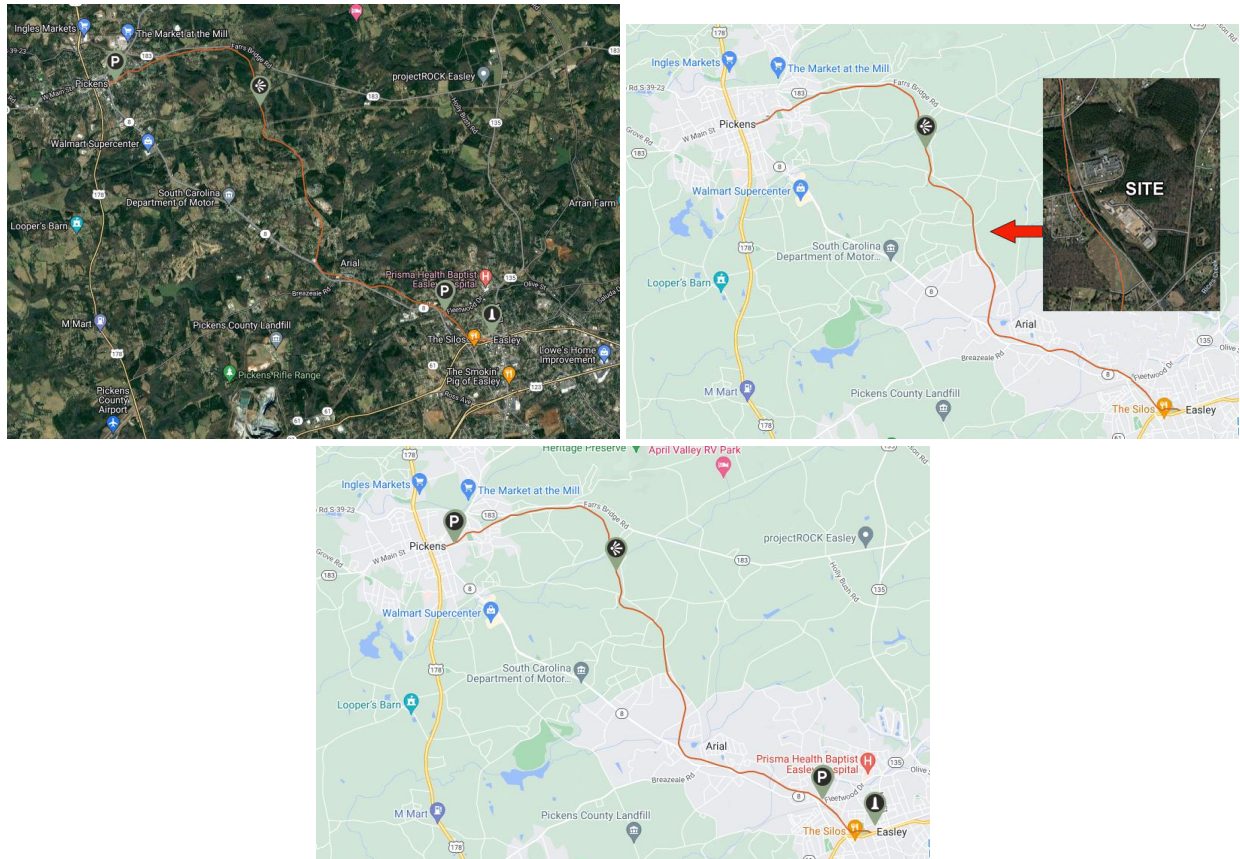
 864-242-4200 • kdscaine.com •  admin@kdscaine.com



*All information contained herein has been obtained from sources deemed reliable,
but we cannot guarantee it. It is also subject to change without notice.*

340 Rocky Slope Rd., Suite 302, Greenville, SC 29607

☎ 864-242-4200 • kdscaine.com • ✉ admin@kdscaine.com



*All information contained herein has been obtained from sources deemed reliable,
but we cannot guarantee it. It is also subject to change without notice.*

340 Rocky Slope Rd., Suite 302, Greenville, SC 29607

☎ 864-242-4200 • kdscaine.com • ✉ admin@kdscaine.com