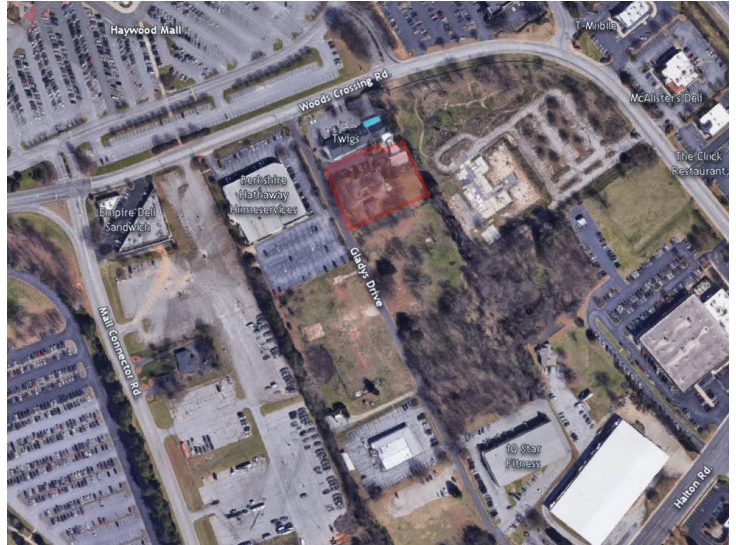


Gladys Drive Greenville, SC 29607

.94 Acres Commercial Land

Property Type	Land
Status	Sold
Sale Price	\$450,000
Acreage	+/- .94 Acre(s)
Zoning	S-1
County	Greenville
Tax Map	0260000102101 & 0260000102600



AGENT CONTACT



MARK RATCHFORD, MAI

mratchford@kdscaine.com

O: 864-242-4200

M: 864-430-0371

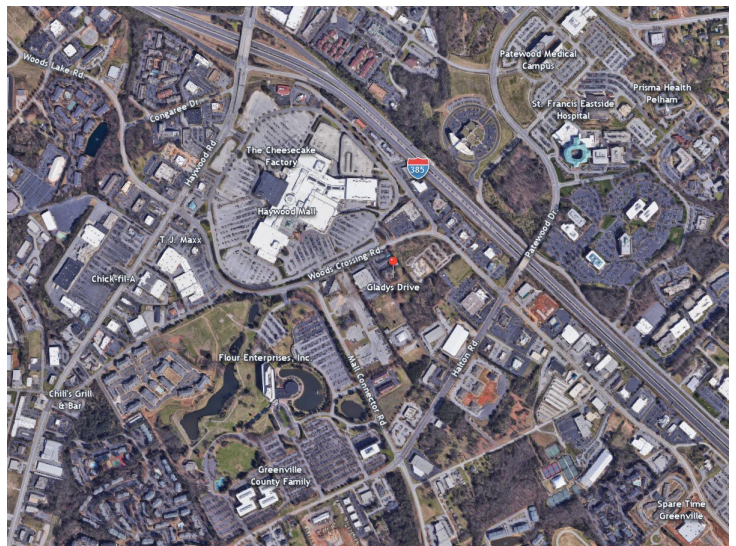


MARK MASASCHI, CCIM

mark@kdscaine.com

O: 864-242-4200

M: 864-380-2614



PROPERTY FEATURES

- +/- .94 acre commercial site
- Located in established and developed area with proximity to Haywood Mall
- Ideally located for medical / general office or retail / restaurant
- Existing improvements include a single family residence, a manufactured house and out building



All information contained herein has been obtained from sources deemed reliable, but we cannot guarantee it. It is also subject to change without notice.

340 Rocky Slope Rd., Suite 302, Greenville, SC 29607

☎ 864-242-4200 • kdscaine.com • ✉ admin@kdscaine.com



*All information contained herein has been obtained from sources deemed reliable,
but we cannot guarantee it. It is also subject to change without notice.*

340 Rocky Slope Rd., Suite 302, Greenville, SC 29607

☎ 864-242-4200 • kdscaine.com • ✉ admin@kdscaine.com