

900 E North Street Greenville, SC 29601

3,143 of office centrally located on E. North St. /I-385 at Downtown Gateway with convenient interstate access

Property Type	Office
Status	Leased
Lease Rate	\$18.50/SF Modified Gross
Square Feet	+/- 3,143 Square Feet
Zoning	MX-3
County	Greenville
Tax Map	0047000300500

AGENT CONTACT



GARY KIRBY

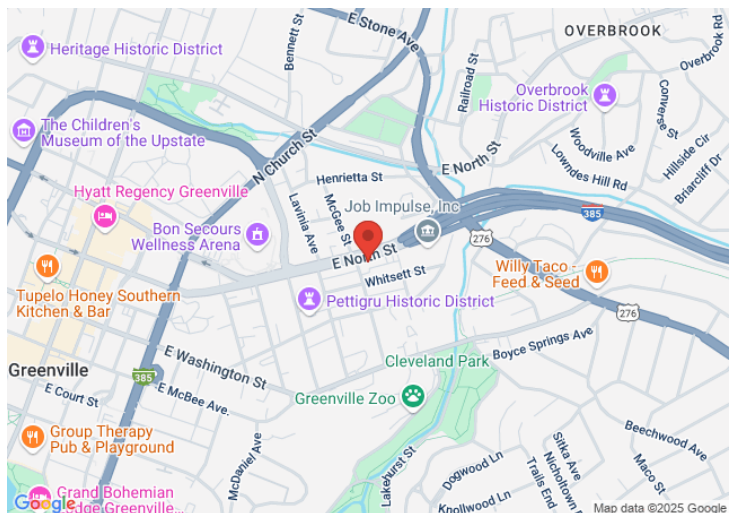
gkirby@kdscaine.com

[O: 864-242-4200](tel:864-242-4200)

[M: 864-650-5556](tel:864-650-5556)

PROPERTY FEATURES

- 11 offices, break room, bull pen and conference room
- On grade parking with elevator serving all floors
- Easy access to I-385, Downtown, Pettigru Office District and Courthouses
- Excellent monument signage opportunity for I-385 traffic
- Lower level storage available and accessible by elevator

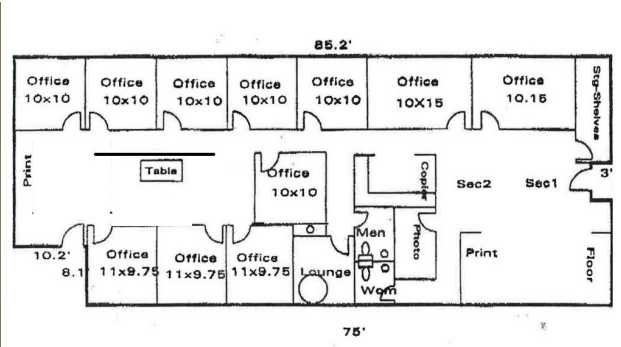


All information contained herein has been obtained from sources deemed reliable, but we cannot guarantee it. It is also subject to change without notice.

340 Rocky Slope Rd., Suite 302, Greenville, SC 29607

☎ 864-242-4200 • kdscaine.com • ✉ admin@kdscaine.com

PHOTOS



All information contained herein has been obtained from sources deemed reliable, but we cannot guarantee it. It is also subject to change without notice.

340 Rocky Slope Rd., Suite 302, Greenville, SC 29607

☎ 864-242-4200 • kdscaine.com • ✉ admin@kdscaine.com