

701 Augusta Arbor Piedmont, SC 29673

Ideal for Church or Office with Proximity to US-251-185, SCTAC, and Donaldson Airport

Property Type	Church, Office
Status	Sold
Property ID	2017201
Sale Price	\$425,000
Acreage	+/- 2 Acre(s)
Square Feet	+/- 6,270 Square Feet
Zoning	I-1
County	Greenville
Tax Map	0593040102100

AGENT CONTACT



GARY KIRBY

gkirby@kdscaine.com

O: 864-242-4200

M: 864-650-5556



MARK RATCHFORD, MAI

mratchford@kdscaine.com

O: 864-242-4200

M: 864-430-0371

PROPERTY FEATURES

- Sanctuary, Classrooms, Offices, and Fellowship Hall
- Ideal for Church or Office
- Proximity to US-251 & I-185, SCTAC, and Donaldson Airport
- Level 2-Acre Lot
- Ample Parking for Facility
- Slab Foundation
- Utilities: Power, Water, Gas Heat

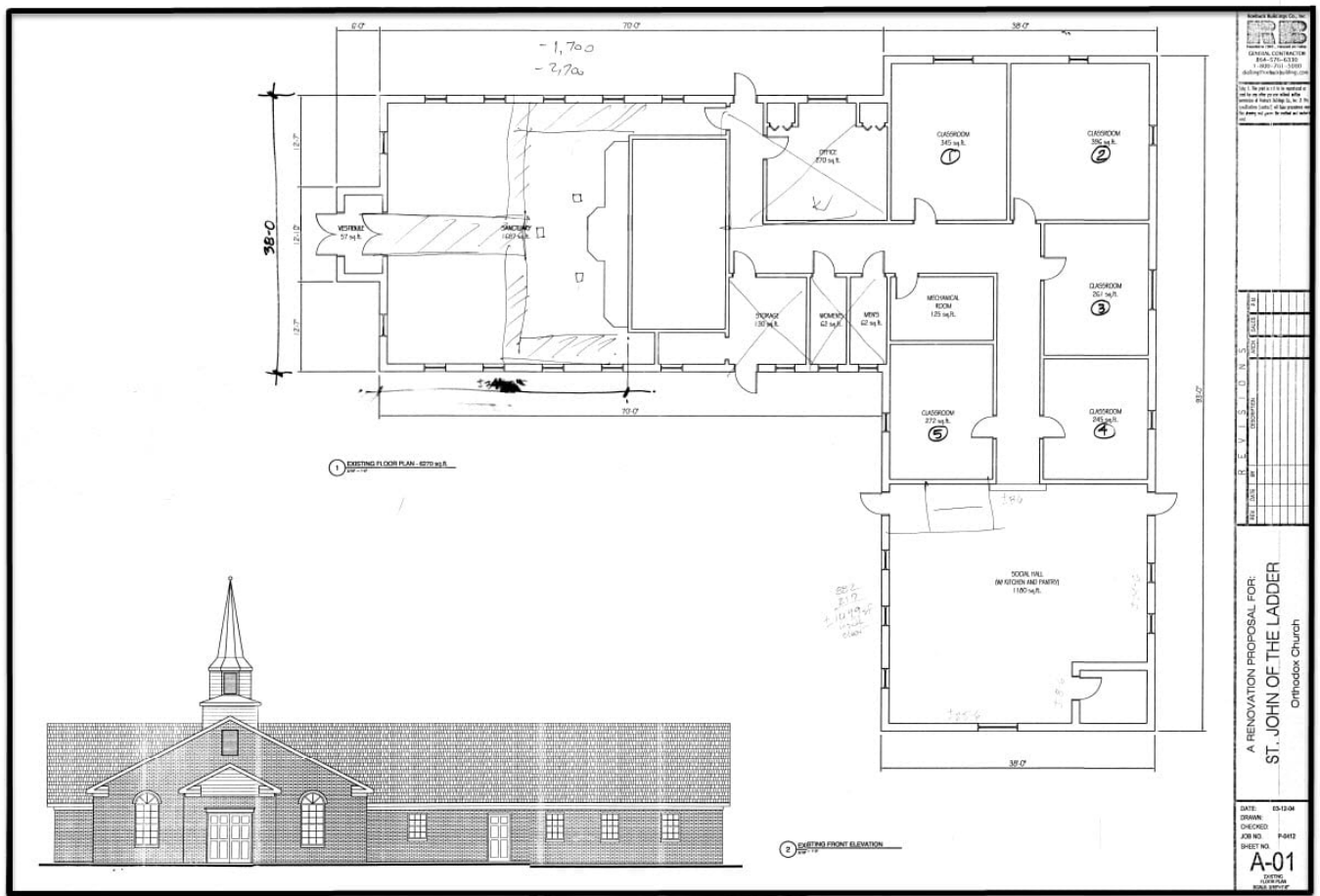


All information contained herein has been obtained from sources deemed reliable, but we cannot guarantee it. It is also subject to change without notice.

340 Rocky Slope Rd., Suite 302, Greenville, SC 29607

☎ 864-242-4200 • kdscaine.com • ✉ admin@kdscaine.com

FLOOR PLAN



All information contained herein has been obtained from sources deemed reliable, but we cannot guarantee it. It is also subject to change without notice.

340 Rocky Slope Rd., Suite 302, Greenville, SC 29607

☎ 864-242-4200 • kdscaine.com • ✉ admin@kdscaine.com

PHOTOS



All information contained herein has been obtained from sources deemed reliable, but we cannot guarantee it. It is also subject to change without notice.

340 Rocky Slope Rd., Suite 302, Greenville, SC 29607

☎ 864-242-4200 • kdscaine.com • ✉ admin@kdscaine.com

PHOTOS



All information contained herein has been obtained from sources deemed reliable, but we cannot guarantee it. It is also subject to change without notice.

340 Rocky Slope Rd., Suite 302, Greenville, SC 29607

☎ 864-242-4200 • kdscaine.com • ✉ admin@kdscaine.com