

610 N Main Street Greenville, SC 29601

Excellent North Main Street Location with
On-Site Parking

Property Type	Office
Status	Leased
Lease Rate	\$17.00/SF MG (Inclusive of Taxes and Insurance)
Square Feet	+/- 4,500 Square Feet
County	Greenville
Tax Map	0034000101200



AGENT CONTACT



BRAD DOYLE

bdoyle@kdscaine.com

O: 864-242-4200

M: 864-237-8458



MARK RATCHFORD, MAI

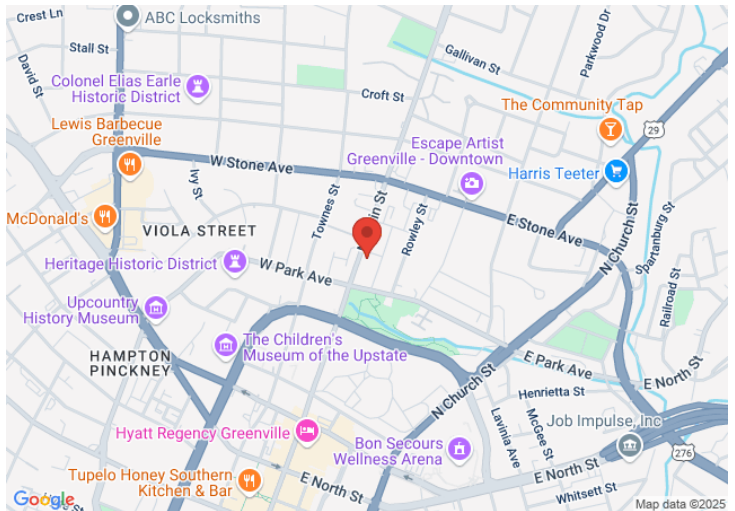
mratchford@kdscaine.com

O: 864-242-4200

M: 864-430-0371

PROPERTY FEATURES

- 4,500 SF Free-Standing Office Building with On-Site Parking
- Excellent N Main Street Location
- 12 Private Offices, Work Room, File Room, Conference Room, and Break Room
- Efficient Floor Plan with Windowed Offices and Large Work Room with Built-In Cabinets
- Owner will consider Subdividing or Upfitting to Suit
- New LED Lighting and Fresh Paint throughout Building

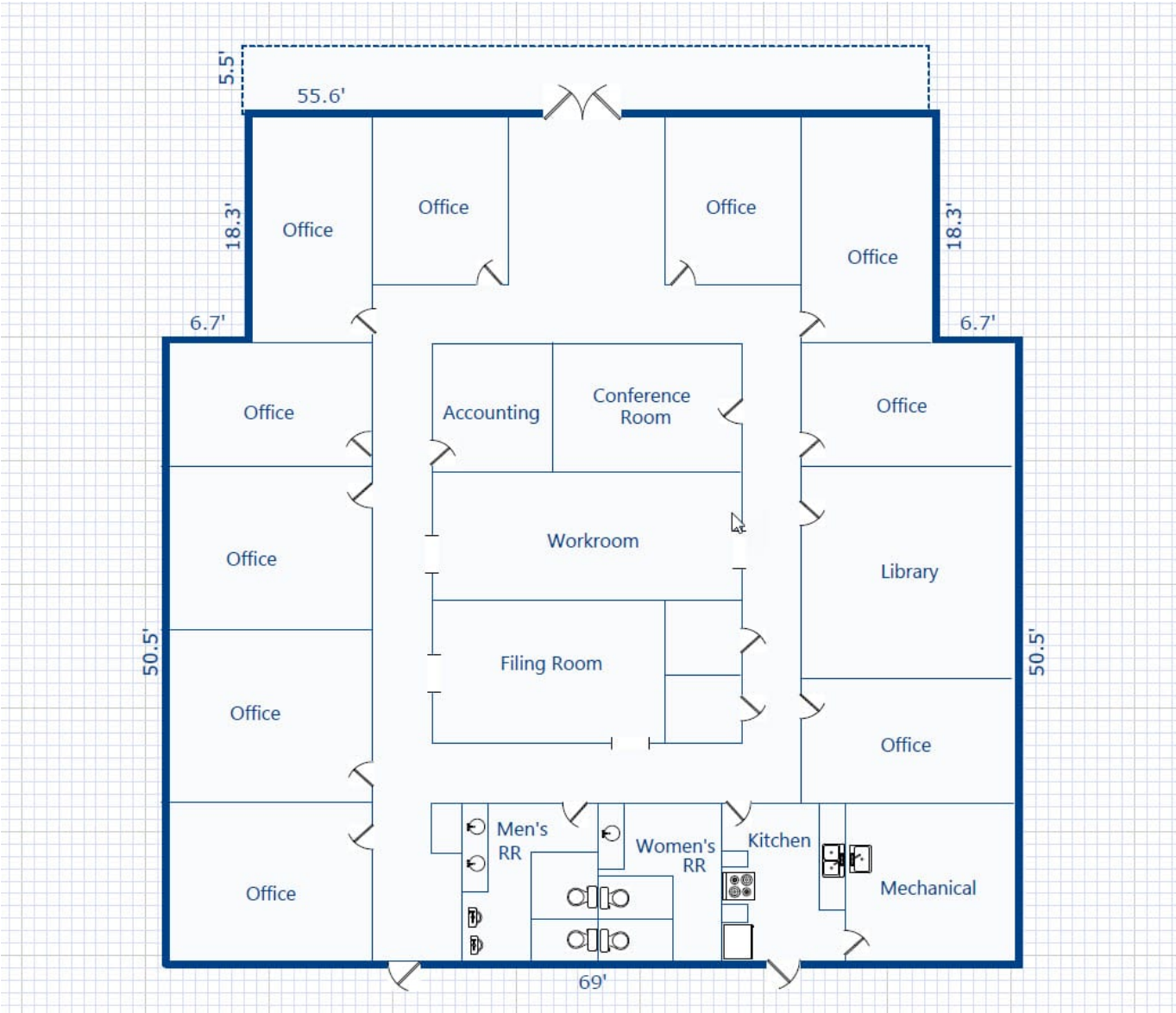


All information contained herein has been obtained from sources deemed reliable, but we cannot guarantee it. It is also subject to change without notice.

340 Rocky Slope Rd., Suite 302, Greenville, SC 29607

☎ 864-242-4200 • kdscaine.com • ✉ admin@kdscaine.com

FLOOR PLAN



All information contained herein has been obtained from sources deemed reliable, but we cannot guarantee it. It is also subject to change without notice.

340 Rocky Slope Rd., Suite 302, Greenville, SC 29607

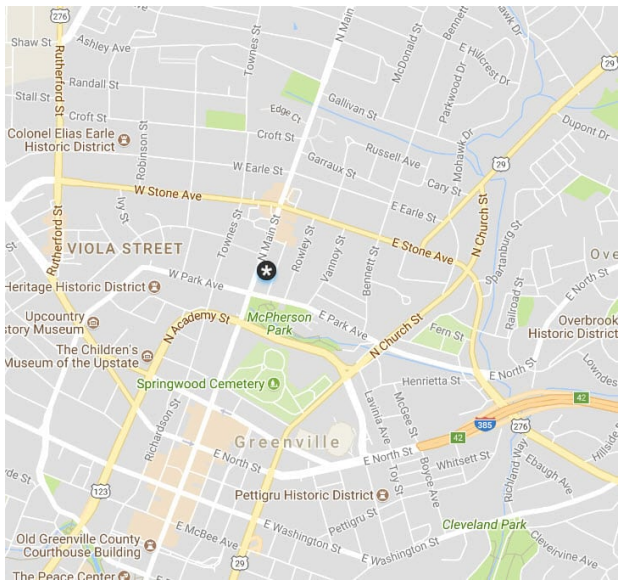
☎ 864-242-4200 • kdscaine.com • ✉ admin@kdscaine.com



*All information contained herein has been obtained from sources deemed reliable,
but we cannot guarantee it. It is also subject to change without notice.*

340 Rocky Slope Rd., Suite 302, Greenville, SC 29607

☎ 864-242-4200 • kdscaine.com • ✉ admin@kdscaine.com



All information contained herein has been obtained from sources deemed reliable, but we cannot guarantee it. It is also subject to change without notice.

340 Rocky Slope Rd., Suite 302, Greenville, SC 29607

☎ 864-242-4200 • kdscaine.com • ✉ admin@kdscaine.com