

500 Taylor Road Mauldin, SC 29607

30 Fully Entitled Lots in 29607 off W. Butler Rd. in Mauldin, SC Outside of Greenville, SC

Property Type	Land
Status	Call for Offers, For Sale
Acreage	+/- 15.2 Acre(s)
County	Greenville
Tax Map	M008020100800

AGENT CONTACT

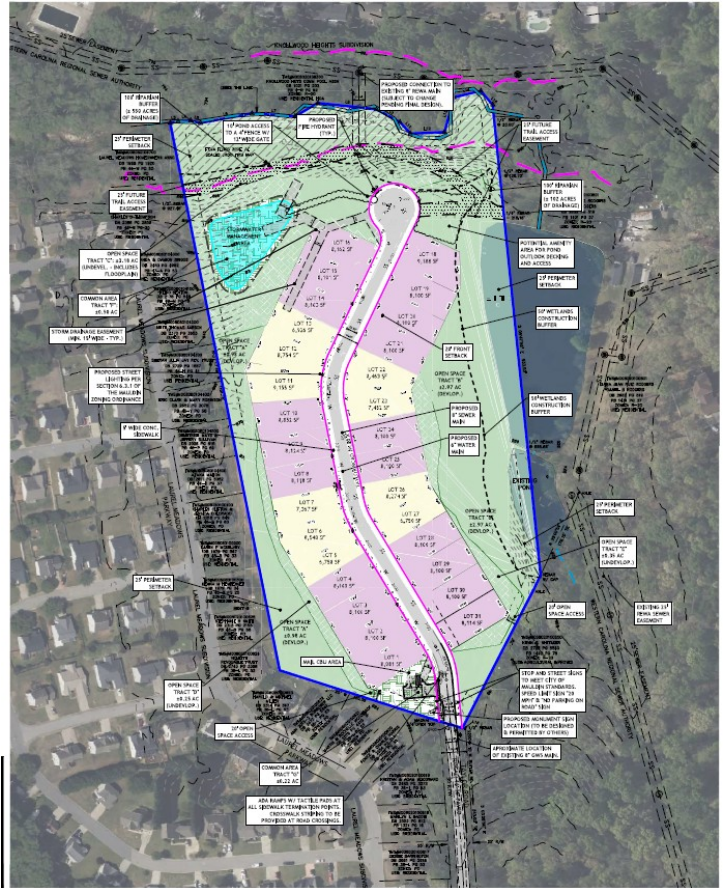


GARY KIRBY

gkirby@kdscaine.com

O: 864-242-4200

M: 864-650-5556



PROPERTY FEATURES

- Call for Offers Due: February 13, 2026 by 5pm
- 30 Fully entitled lots within the City of Mauldin, SC
- Award winning public and private schools within a 3-mile radius: Christ Church Episcopal School, JL Mann, St. Joseph's Catholic School
- Proximity to Mauldin Main Street retail corridor including Publix Anchor Center, Conestee Nature Preserve, Greenville County Sports Recreation Complex, Swamp Rabbit Trail Extension, and the Clemson University International Center for Automotive Research (CU-ICAR)
- Send offers to gkirby@kdscaine.com. Please submit qualifying details with offer including: principles of the acquiring entity, plans for development, source of funding, and portfolio examples of similar projects developed.



All information contained herein has been obtained from sources deemed reliable, but we cannot guarantee it. It is also subject to change without notice.

340 Rocky Slope Rd., Suite 302, Greenville, SC 29607

📞 864-242-4200 • kdscaine.com • ✉ admin@kdscaine.com