

## 6 Main Street Piedmont, SC 29673

Street Retail in Downtown Piedmont | 4  
Storefronts in 2 Buildings

<b>Property Type</b>	Retail
<b>Status</b>	Sold
<b>Property ID</b>	2261
<b>Sale Price</b>	\$225,000
<b>Square Feet</b>	+/- 25,000 Square Feet
<b>Zoning</b>	CCD (Core Commercial District)
<b>County</b>	Greenville
<b>Tax Map</b>	0616030100100, 0616030100300, 0616030114500 (parking)

### AGENT CONTACT

### PROPERTY FEATURES

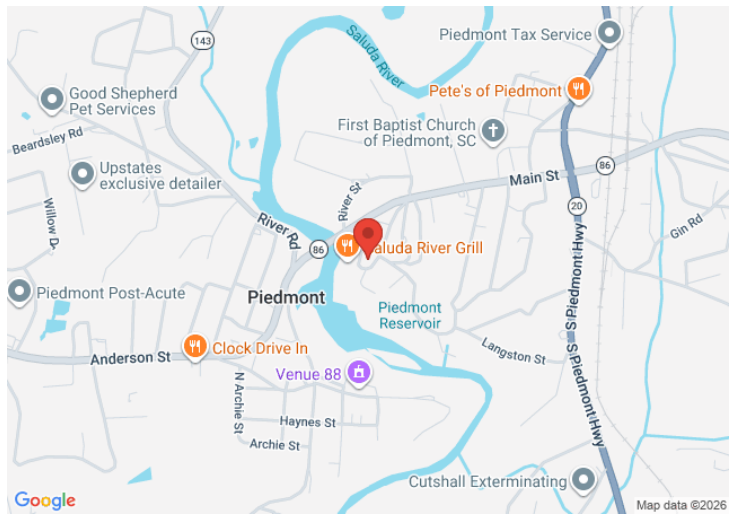
- Four (4) Street Level Storefronts - 4, 6, 8, 10 Main Street
- Heart of Downtown Piedmont
- Overlooking Saluda River
- Floor 1: 5,000 SF, near Ready for Occupancy | Floor 2: 10,000 SF, Currently Storage Space
- Basement: +/- 5,000 SF of Unfinished Space
- Sprinkler System and New Roof System
- Ideal Redevelopment Opportunity: 1st Level as Retail - 2nd Level as Living Space
- Click link under "Related Properties" for adjacent building also For Sale: Includes 10,000 SF and single (1) Storefront



*All information contained herein has been obtained from sources deemed reliable, but we cannot guarantee it. It is also subject to change without notice.*

340 Rocky Slope Rd., Suite 302, Greenville, SC 29607

☎ 864-242-4200 • [kdscaine.com](http://kdscaine.com) • ✉ [admin@kdscaine.com](mailto:admin@kdscaine.com)



*All information contained herein has been obtained from sources deemed reliable,  
but we cannot guarantee it. It is also subject to change without notice.*

**340 Rocky Slope Rd., Suite 302, Greenville, SC 29607**

**☎ 864-242-4200 • [kdscaine.com](http://kdscaine.com) • ✉ [admin@kdscaine.com](mailto:admin@kdscaine.com)**



## PHOTOS

---

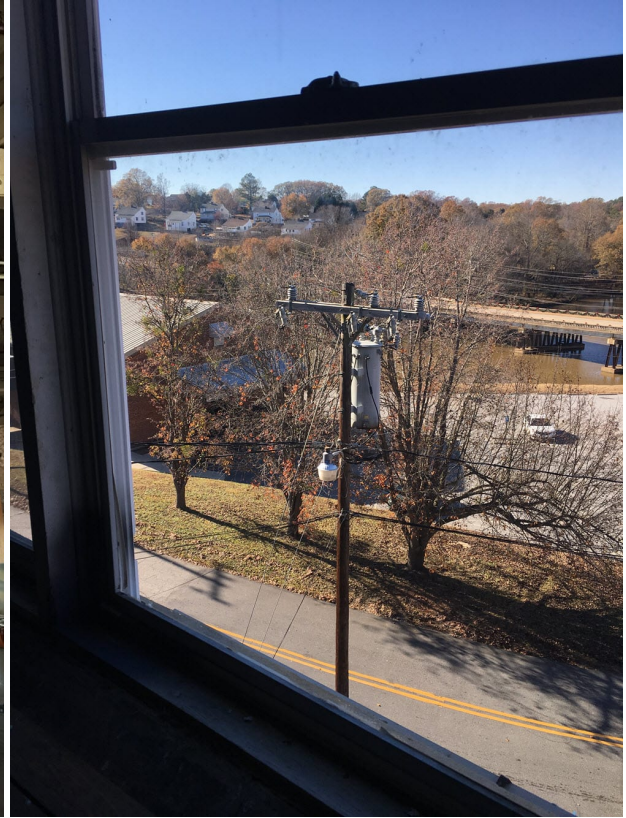


*All information contained herein has been obtained from sources deemed reliable, but we cannot guarantee it. It is also subject to change without notice.*

**340 Rocky Slope Rd., Suite 302, Greenville, SC 29607**

**☎ 864-242-4200 • [kdscaine.com](http://kdscaine.com) • ✉ [admin@kdscaine.com](mailto:admin@kdscaine.com)**





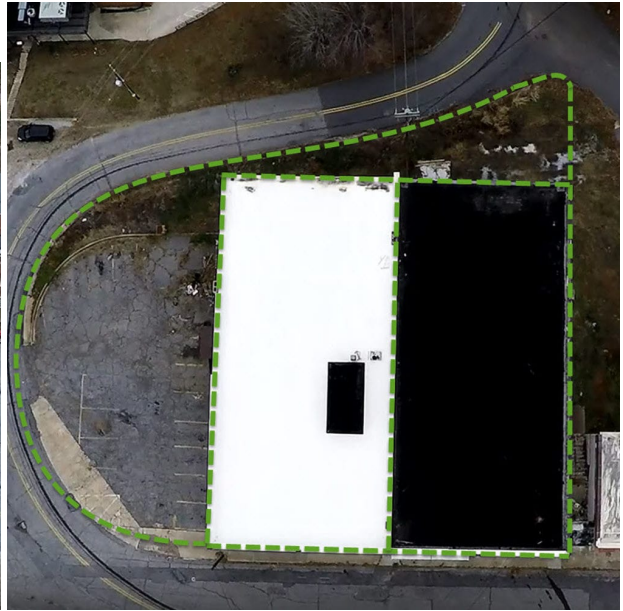
*All information contained herein has been obtained from sources deemed reliable,  
but we cannot guarantee it. It is also subject to change without notice.*

**340 Rocky Slope Rd., Suite 302, Greenville, SC 29607**

**☎ 864-242-4200 • [kdscaine.com](http://kdscaine.com) • ✉ [admin@kdscaine.com](mailto:admin@kdscaine.com)**

## PHOTOS

---



*All information contained herein has been obtained from sources deemed reliable,  
but we cannot guarantee it. It is also subject to change without notice.*

**340 Rocky Slope Rd., Suite 302, Greenville, SC 29607**

**☎ 864-242-4200 • [kdscaine.com](http://kdscaine.com) • ✉ [admin@kdscaine.com](mailto:admin@kdscaine.com)**