

308 W Stone Avenue Greenville, SC 29601

Office Space for Lease | Downtown
Greenville | Flexible Lease Terms

Property Type	Office
Status	Sold
Lease Rate	\$14.50/SF or \$1,675/Month/NNN (plus Taxes and Insurance @ approx \$350/month)
Square Feet	+/- 1,386 Square Feet
Zoning	OD, RDV
County	Greenville
Tax Map	0008000303200



AGENT CONTACT



LARRY WEBB

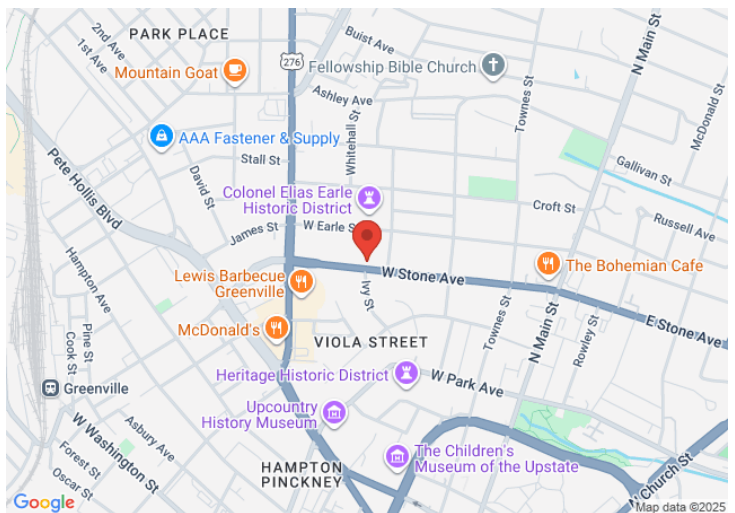
lwebb@kdscaine.com

O: 864-242-4200

M: 864-238-6673

PROPERTY FEATURES

- Downtown Location with Easy Access on W Stone Avenue
- 10 On-Site Parking Spaces
- Five (5) Offices with Reception Area and Breakroom
- Great Visibility in High Traffic Area
- Walkable to Downtown | Quick access to Greenville's Geenlink Transit and Downtown Trolley
- Three (3) Year-Minimum Term
- Fresh Paint throughout and Ready to Lease
- City Sewer

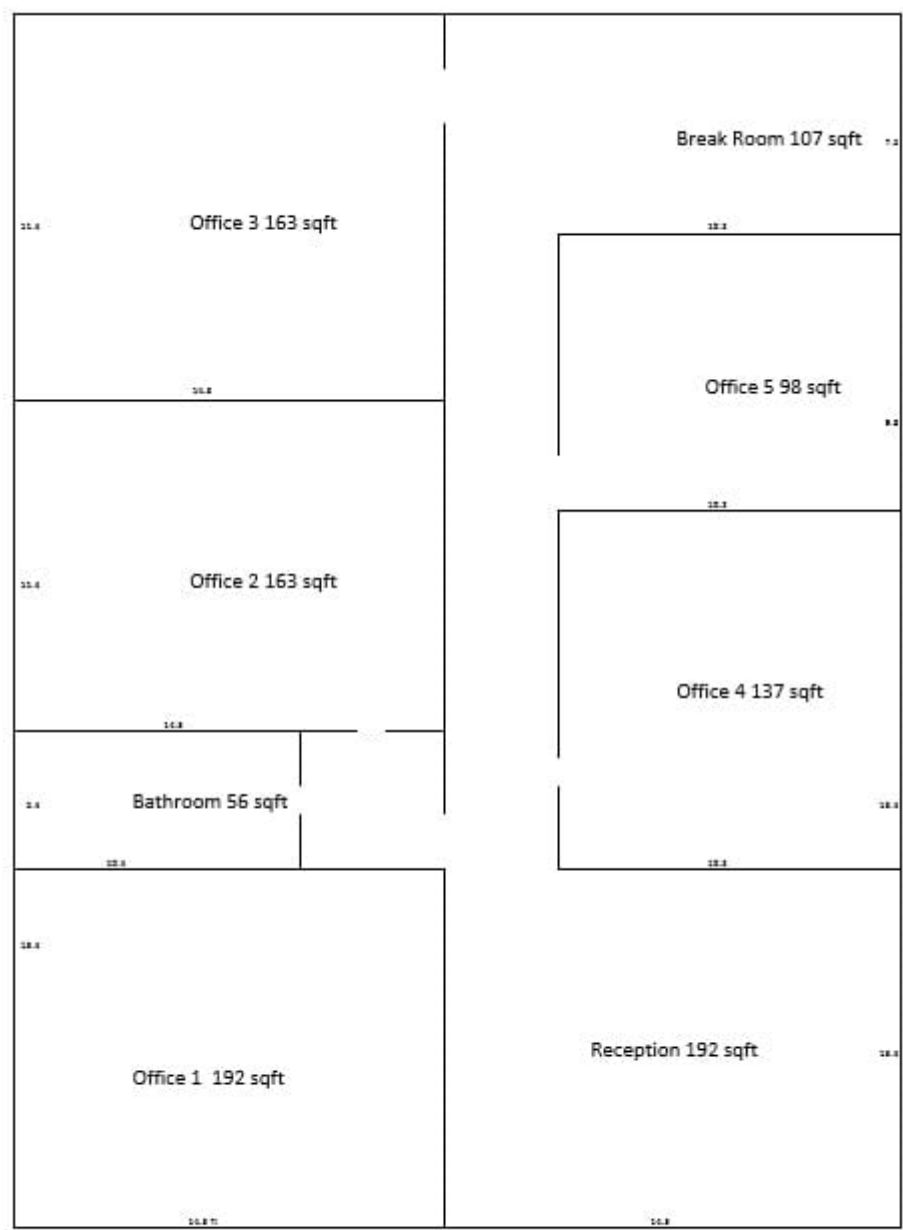


All information contained herein has been obtained from sources deemed reliable, but we cannot guarantee it. It is also subject to change without notice.

340 Rocky Slope Rd., Suite 302, Greenville, SC 29607

☎ 864-242-4200 • kdscaine.com • ✉ admin@kdscaine.com

FLOOR PLAN



1380 Approximate Total sqft
46 ft length x 30 ft width
* Measurements are approximate, not to scale
** Dimensions measured in tenths of feet

All information contained herein has been obtained from sources deemed reliable, but we cannot guarantee it. It is also subject to change without notice.

340 Rocky Slope Rd., Suite 302, Greenville, SC 29607

☎ 864-242-4200 • kdscaine.com • ✉ admin@kdscaine.com

PHOTOS



All information contained herein has been obtained from sources deemed reliable, but we cannot guarantee it. It is also subject to change without notice.

340 Rocky Slope Rd., Suite 302, Greenville, SC 29607

☎ 864-242-4200 • kdscaine.com • ✉ admin@kdscaine.com

*All information contained herein has been obtained from sources deemed reliable,
but we cannot guarantee it. It is also subject to change without notice.*

340 Rocky Slope Rd., Suite 302, Greenville, SC 29607

☎ 864-242-4200 • kdscaine.com • ✉ admin@kdscaine.com