

2854 Wade Hampton Boulevard Taylors, SC 29687

Property Type	Office, Retail, Warehouse/Flex
Status	For Lease
Lease Rate	\$11.00/SF plus CAM of \$2.12/SF
Square Feet	+/- 5,000 Square Feet
Zoning	C-2
County	Greenville
Tax Map	P015060402500



AGENT CONTACT



GARY KIRBY

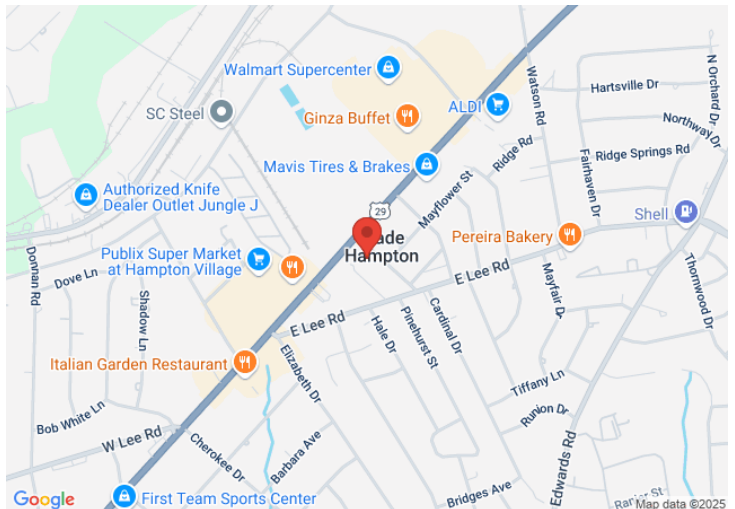
gkirby@kdscaine.com

O: 864-242-4200

M: 864-650-5556

PROPERTY FEATURES

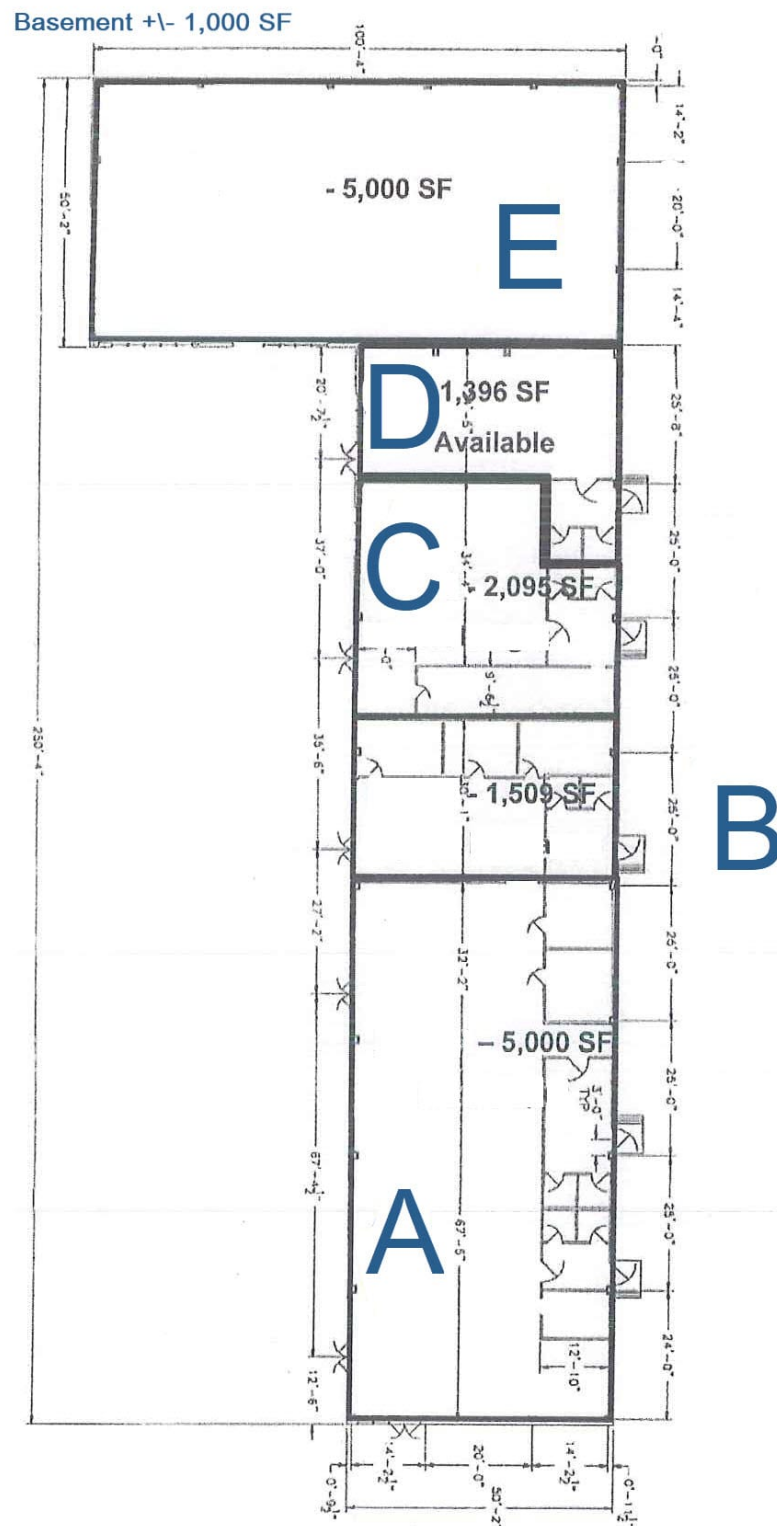
- +/- 15,000 SF of Flex, Retail, or Office Space, including End Cap
- Ample Parking and Yard Storage Available
- Suites Available from 1,400 to 5,000 SF
- Monument Signage Available fronting Wade Hampton Boulevard
- High Traffic Count: 32,100 VPD with Signalized Intersection
- Located near national retailers WalMart, Publix, Aldi, Chick-Fil-A and AutoZone



All information contained herein has been obtained from sources deemed reliable, but we cannot guarantee it. It is also subject to change without notice.

340 Rocky Slope Rd., Suite 302, Greenville, SC 29607

☎ 864-242-4200 • kdscaine.com • ✉ admin@kdscaine.com



All information contained herein has been obtained from sources deemed reliable, but we cannot guarantee it. It is also subject to change without notice.

340 Rocky Slope Rd., Suite 302, Greenville, SC 29607

☎ 864-242-4200 • kdscaine.com • ✉ admin@kdscaine.com