

27 North Georgia Avenue Greenville, SC 29611

Opportunity for owner-user or redevelopment

Property Type	Industrial
Status	Sold
Sale Price	\$785,000
Acreage	+/- 1.1 Acre(s)
Square Feet	+/- 26,000 Square Feet
Zoning	S-1, R7.5
County	Greenville
Tax Map	0116001300500, 0229000600200



AGENT CONTACT



BRAD DOYLE

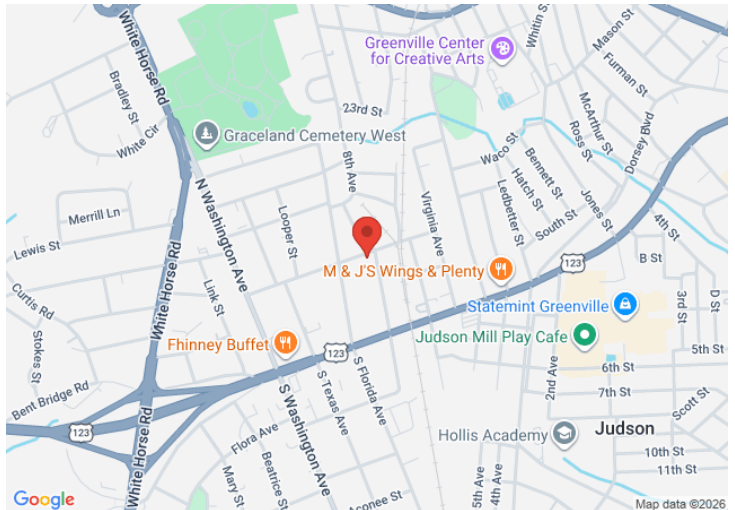
bdoyle@kdscaine.com

O: [864-242-4200](tel:864-242-4200)

M: [864-237-8458](tel:864-237-8458)

PROPERTY FEATURES

- 1/2 mile from vibrant new live-work play, mixed-use redevelopment Judson Mill
- +/- 2 miles from Downtown Greenville
- Located in Greenville County just outside city limits of Greenville
- Adjacent parcel contiguous with two small homes included
- Greenville County Future Land Use Plan : Traditional neighborhood near mixed use corridor



All information contained herein has been obtained from sources deemed reliable, but we cannot guarantee it. It is also subject to change without notice.

340 Rocky Slope Rd., Suite 302, Greenville, SC 29607

☎ 864-242-4200 · kdscaine.com · ✉ admin@kdscaine.com

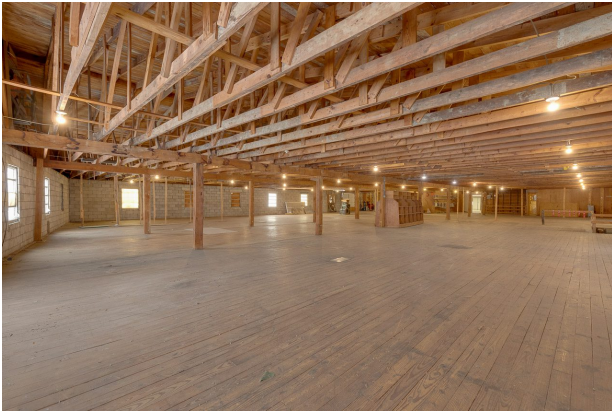
PHOTOS



All information contained herein has been obtained from sources deemed reliable, but we cannot guarantee it. It is also subject to change without notice.

340 Rocky Slope Rd., Suite 302, Greenville, SC 29607

☎ 864-242-4200 · kdscaine.com · ✉ admin@kdscaine.com



All information contained herein has been obtained from sources deemed reliable, but we cannot guarantee it. It is also subject to change without notice.

340 Rocky Slope Rd., Suite 302, Greenville, SC 29607

☎ 864-242-4200 • kdscaine.com • ✉ admin@kdscaine.com