

215 Siloam Road Powdersville, SC 29642

Office Available For Lease

Property Type	Office
Status	Sold
Property ID	8740
Lease Rate	\$9.287/SF or \$1,400/Month, NNN
Acreage	+/- .42 Acre(s)
Square Feet	+/- 1,809 Square Feet
County	Anderson
Tax Map	2360704013



AGENT CONTACT



GARY KIRBY

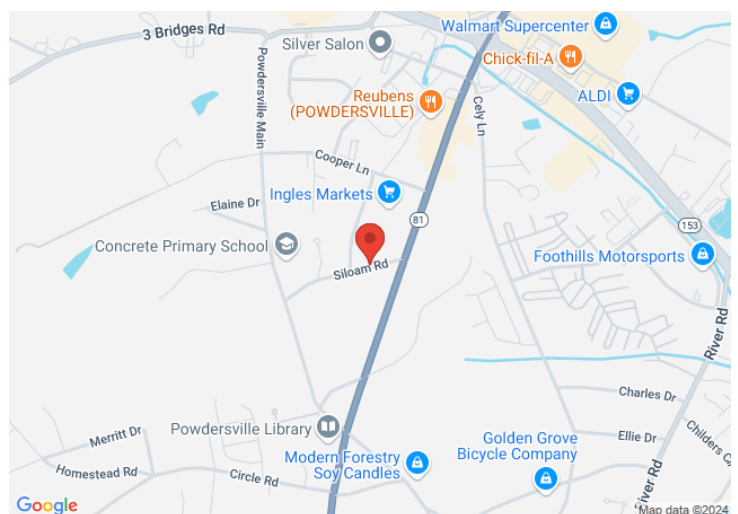
gkirby@kdscaine.com

O: 864-242-4200

M: 864-650-5556

PROPERTY FEATURES

- Private Office Space with Large Area for Conference Room Setup
- Reception Area, Full Kitchen, All Utilities
- Convenient to SC153 & Hwy 81 Commercial District
- Approximately 15 Minutes to Downtown Greenville and Convenient Access to I-85
- ADA Accessible
- Ample Parking Lot/Spaces
- Suitable for Professional Office



All information contained herein has been obtained from sources deemed reliable, but we cannot guarantee it. It is also subject to change without notice.

340 Rocky Slope Rd., Suite 302, Greenville, SC 29607

 864-242-4200 · kdscaine.com ·  admin@kdscaine.com

PHOTOS

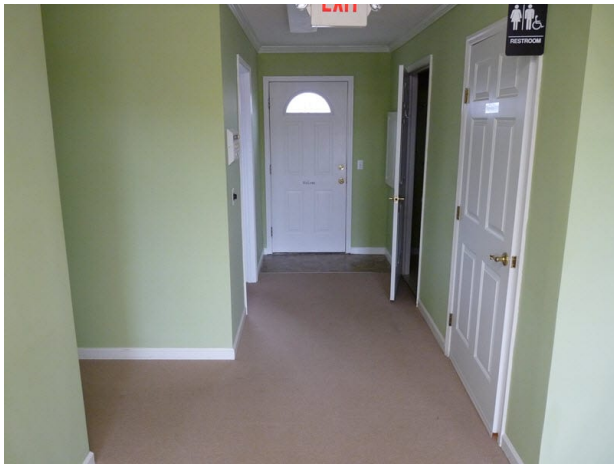


All information contained herein has been obtained from sources deemed reliable, but we cannot guarantee it. It is also subject to change without notice.

340 Rocky Slope Rd., Suite 302, Greenville, SC 29607

☎ 864-242-4200 · kdscaine.com · ✉ admin@kdscaine.com

PHOTOS



All information contained herein has been obtained from sources deemed reliable, but we cannot guarantee it. It is also subject to change without notice.

340 Rocky Slope Rd., Suite 302, Greenville, SC 29607

☎ 864-242-4200 · kdscaine.com · ✉ admin@kdscaine.com



All information contained herein has been obtained from sources deemed reliable, but we cannot guarantee it. It is also subject to change without notice.

340 Rocky Slope Rd., Suite 302, Greenville, SC 29607

☎ 864-242-4200 · kdscaine.com · ✉ admin@kdscaine.com