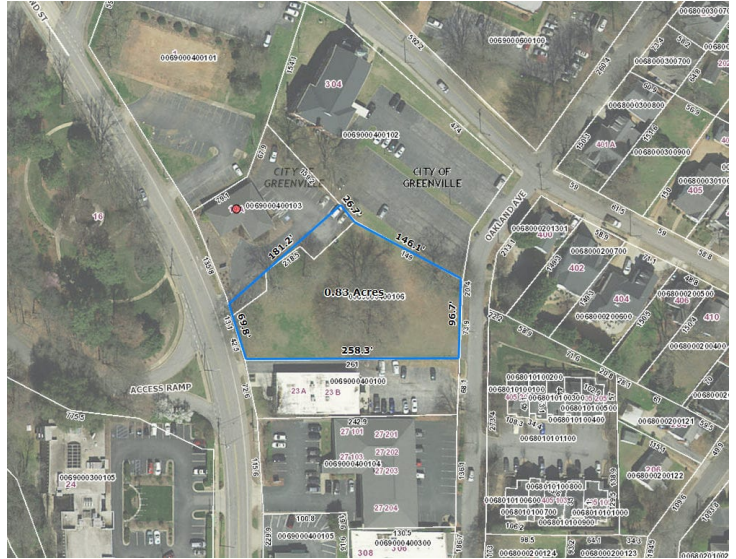


21 Cleveland Street Greenville, SC 29601

Prime Location on Cleveland Street | Near
Greenville's CBD & County Square

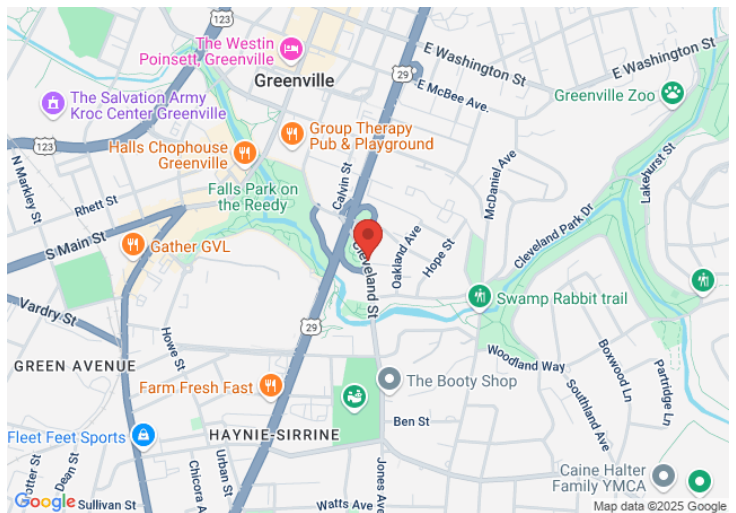
Property Type	Land
Status	Sold
Sale Price	\$1,485,000
Acreage	+/- .851 Acre(s)
Square Feet	+/- 37,060 Square Feet
Zoning	OD
County	Greenville



AGENT CONTACT

PROPERTY FEATURES

- Prime Location on Cleveland Street near Greenville's CBD and County Square
- Located across from Chamber of Commerce and the Cancer Survivors Park
- Suitable for Professional Office, Medical, or Residential Development
- Zoned OD, City of Greenville

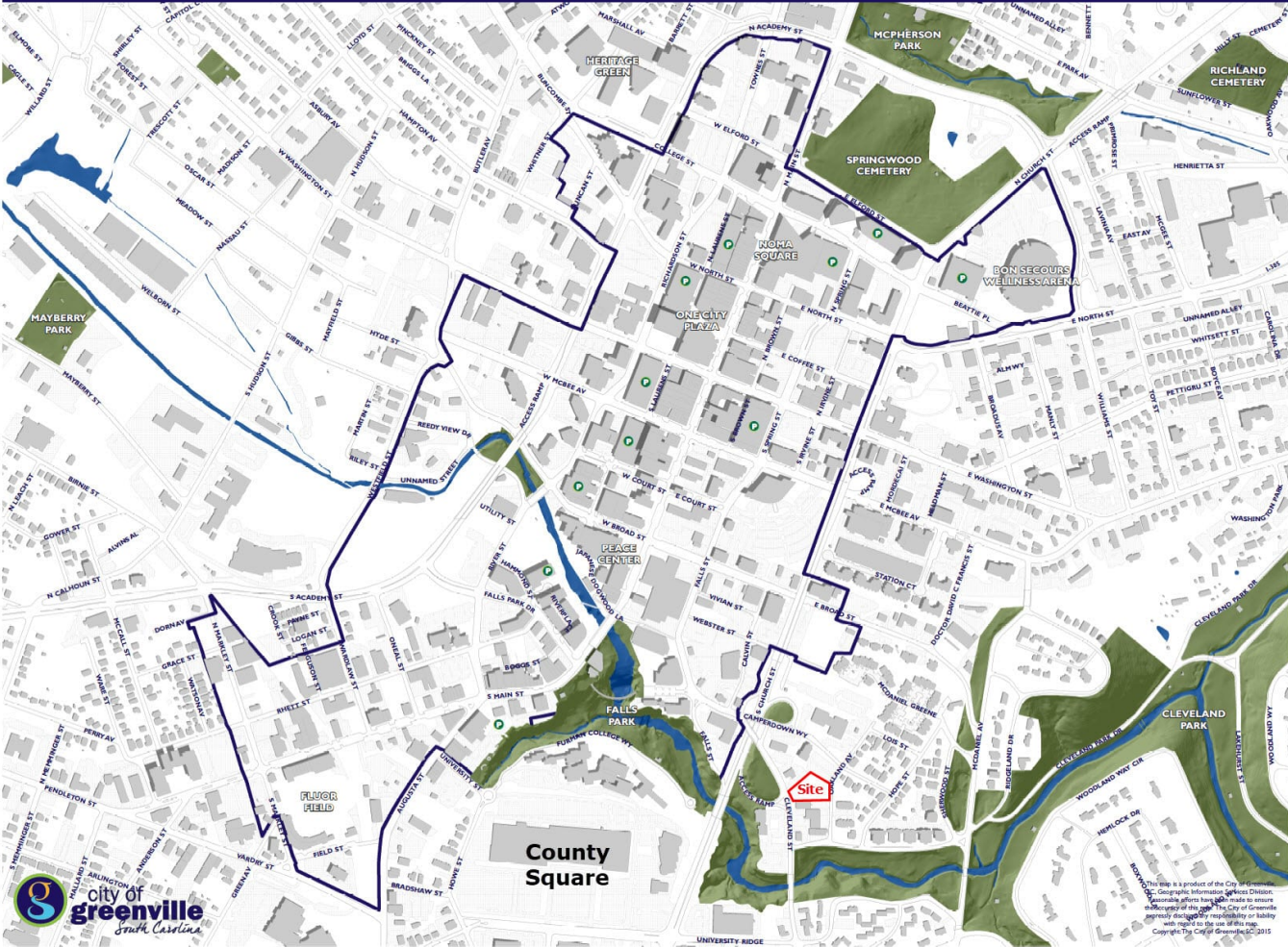


*All information contained herein has been obtained from sources deemed reliable,
but we cannot guarantee it. It is also subject to change without notice.*

340 Rocky Slope Rd., Suite 302, Greenville, SC 29607

☎ 864-242-4200 • kdscaine.com • ✉ admin@kdscaine.com

Central Business District



All information contained herein has been obtained from sources deemed reliable, but we cannot guarantee it. It is also subject to change without notice.

340 Rocky Slope Rd., Suite 302, Greenville, SC 29607

☎ 864-242-4200 • kdscaine.com • ✉ admin@kdscaine.com