

200 Whitsett St. Suite C Greenville, SC 29601

Downtown Greenville's Pettigru Historic District

Property Type	Office
Status	Leased
Lease Rate	\$1750 per month
Square Feet	+/- 1,480 Square Feet
Zoning	OD
County	Greenville

AGENT CONTACT



T. COX

tcox@kdscaine.com

[O: 864-242-4200](tel:864-242-4200)

[M: 864-747-0602](tel:864-747-0602)

PROPERTY FEATURES

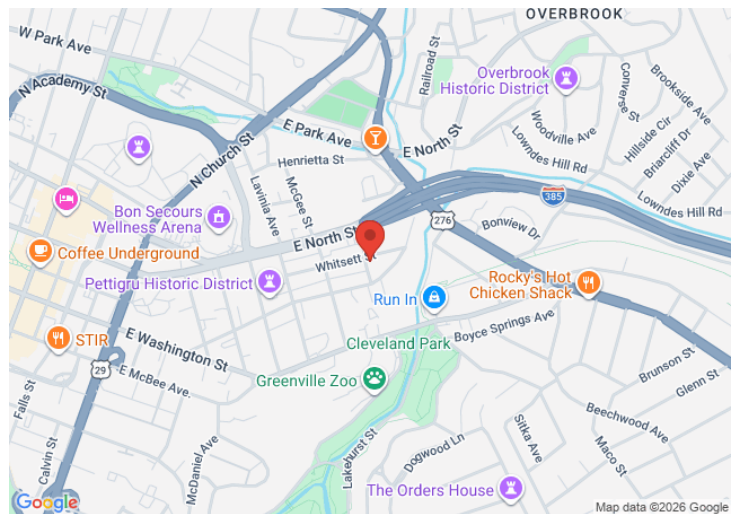
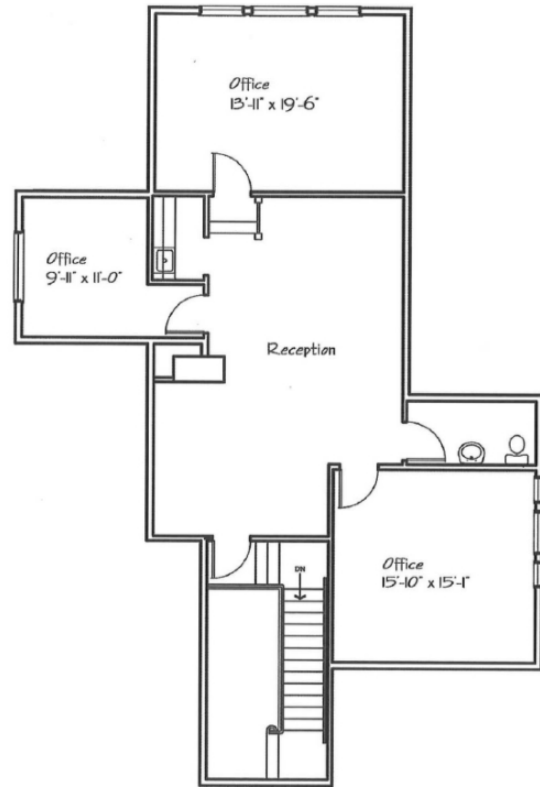
- Corner of Whitsett Street and Carolina Drive
- Tenant Pays Utilities
- 2nd Floor Space 3 Private Offices, Large Open Work Area, Kitchenette, Restroom
- Surface Parking Available On-site
- Exterior Signage Available
- Easy Access From I-385 Close Proximity to Downtown



All information contained herein has been obtained from sources deemed reliable, but we cannot guarantee it. It is also subject to change without notice.

340 Rocky Slope Rd., Suite 302, Greenville, SC 29607

 864-242-4200 · kdscaine.com ·  admin@kdscaine.com



All information contained herein has been obtained from sources deemed reliable, but we cannot guarantee it. It is also subject to change without notice.

340 Rocky Slope Rd., Suite 302, Greenville, SC 29607

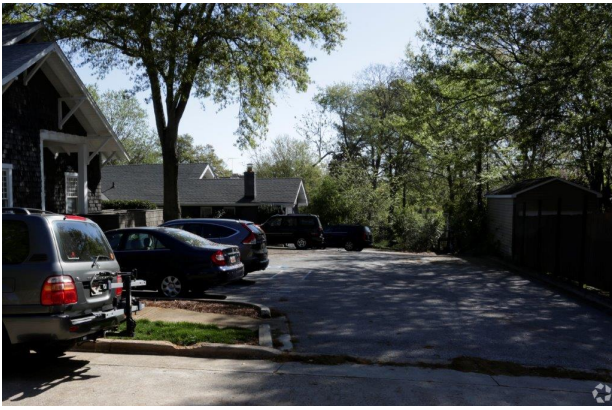
☎ 864-242-4200 • kdscaine.com • ✉ admin@kdscaine.com



All information contained herein has been obtained from sources deemed reliable, but we cannot guarantee it. It is also subject to change without notice.

340 Rocky Slope Rd., Suite 302, Greenville, SC 29607

☎ 864-242-4200 • kdscaine.com • ✉ admin@kdscaine.com



*All information contained herein has been obtained from sources deemed reliable,
but we cannot guarantee it. It is also subject to change without notice.*

340 Rocky Slope Rd., Suite 302, Greenville, SC 29607

☎ 864-242-4200 · kdscaine.com · ✉ admin@kdscaine.com