

## 164 Milestone Way Greenville, SC 29615

Professional Office Space in Pelham/I-85  
Submarket

<b>Property Type</b>	Office
Status	Leased
<b>County</b>	Greenville



### AGENT CONTACT



BRAD DOYLE

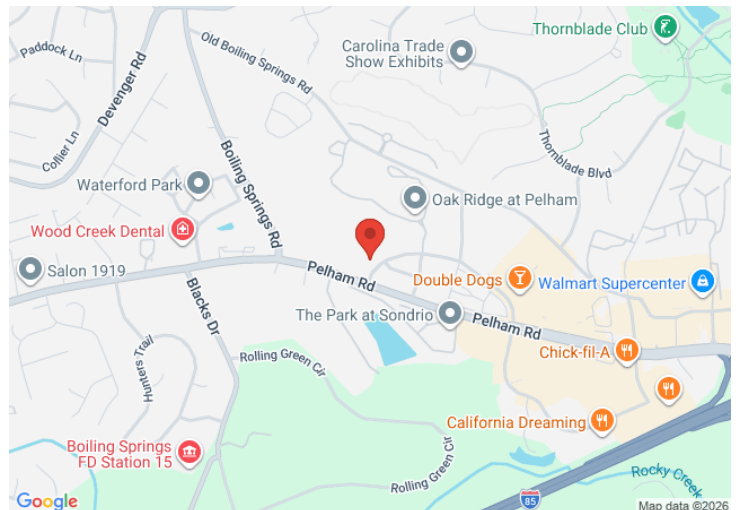
[bdoyle@kdscaine.com](mailto:bdoyle@kdscaine.com)

[O: 864-242-4200](tel:864-242-4200)

[M: 864-237-8458](tel:864-237-8458)

### PROPERTY FEATURES

- Professional Office Space and Open-Cubicle Space of up to 6,882 SF
- Sub-Dividable down to +/- 1,400 SF, pending other Flexible Office Suite Arrangements for Qualified Tenant Prospects
- Availability is entirely 2nd Floor and served by Elevator from Large Professional Reception Area on 1st Floor for Visitors
- Landlord to Provide Fresh Paint, Lighting Upgrade, and New Flooring throughout
- Highly-Desirable Pelham/I-85 Office Corridor with Traffic Light Access to Pelham Road
- Building Amenities include Full-Service Print Shop - Tenants receive significant discount on all print orders (see print shop brochure attachment @ bottom right)
- Pricing Addendum Attached

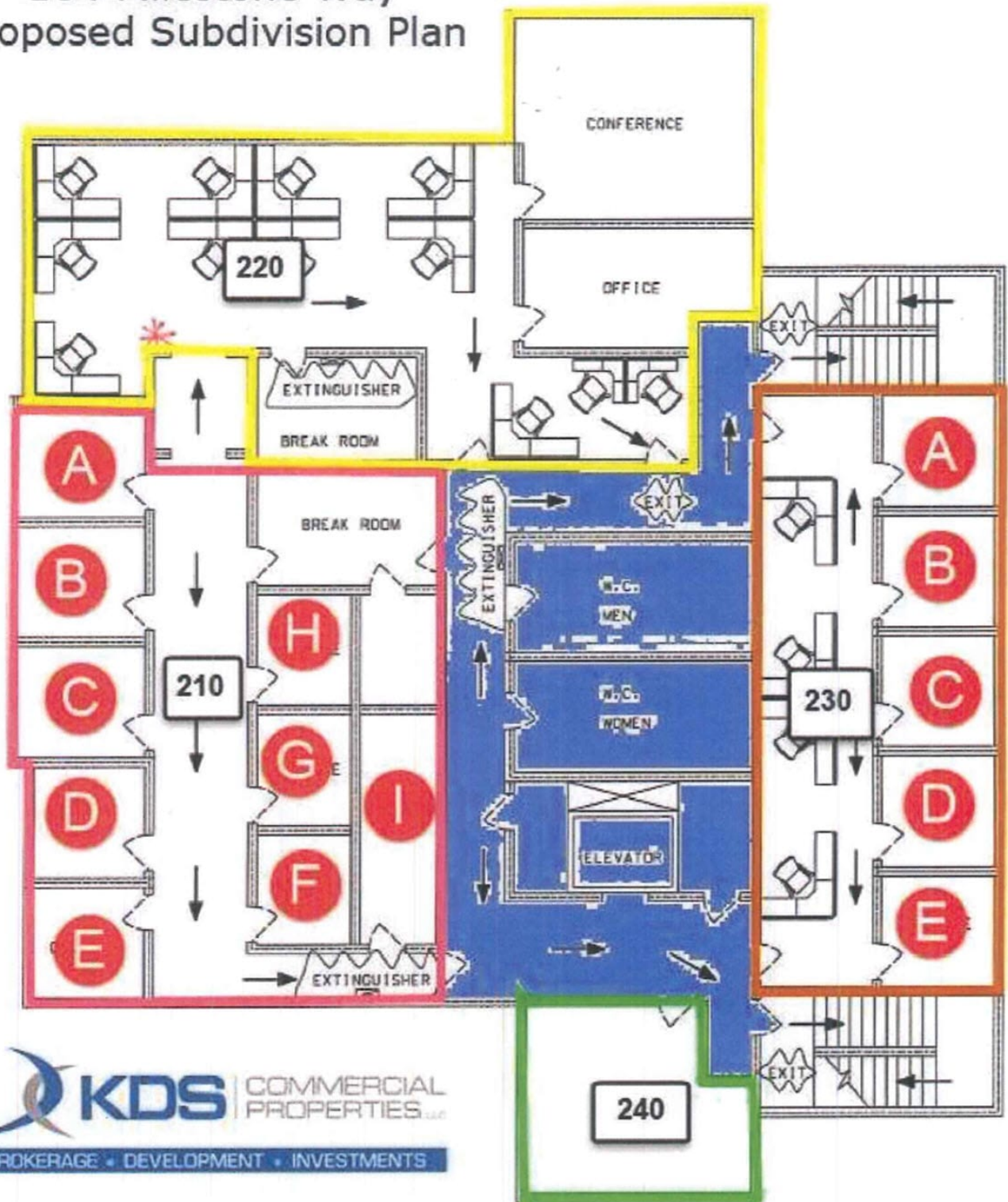


*All information contained herein has been obtained from sources deemed reliable, but we cannot guarantee it. It is also subject to change without notice.*

340 Rocky Slope Rd., Suite 302, Greenville, SC 29607

☎ 864-242-4200 · [kdscaine.com](http://kdscaine.com) · ✉ [admin@kdscaine.com](mailto:admin@kdscaine.com)

# 164 Milestone Way Proposed Subdivision Plan



*All information contained herein has been obtained from sources deemed reliable, but we cannot guarantee it. It is also subject to change without notice.*

340 Rocky Slope Rd., Suite 302, Greenville, SC 29607

☎ 864-242-4200 • [kdscaine.com](http://kdscaine.com) • ✉ [admin@kdscaine.com](mailto:admin@kdscaine.com)



*All information contained herein has been obtained from sources deemed reliable, but we cannot guarantee it. It is also subject to change without notice.*

**340 Rocky Slope Rd., Suite 302, Greenville, SC 29607**

**☎ 864-242-4200 · [kdscaine.com](http://kdscaine.com) · ✉ [admin@kdscaine.com](mailto:admin@kdscaine.com)**