

1544 Pine Ridge Drive West Columbia, SC 29172

Former Steel Fabrication Facility

Property Type	Industrial
Status	Sold
Sale Price	\$355,000
Acreage	+/- 3.09 Acre(s)
Square Feet	+/- 30,604 Square Feet
Zoning	ID
County	Lexington
Tax Map	007997-03-001



AGENT CONTACT



RICKEY HEATON

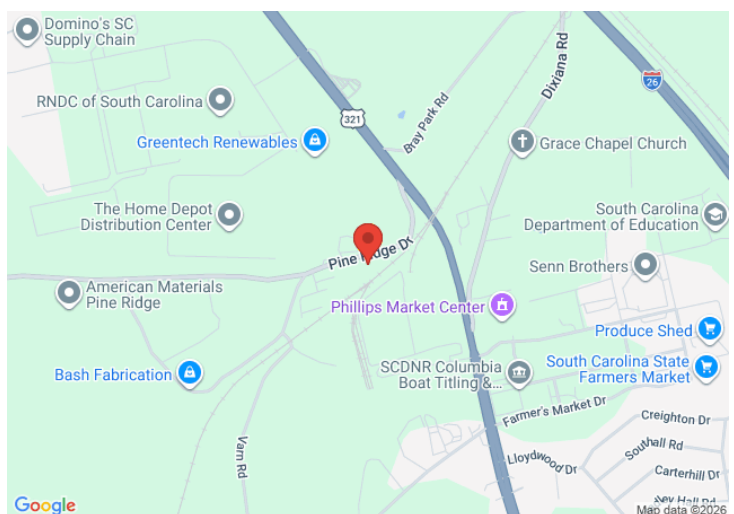
rheaton@kdscaine.com

O: 864-242-4200 ext. 216

M: 864-350-0323

PROPERTY FEATURES

- Total of 30,604 SF: 23,141 SF Main Plant, 2,391 SF Office, 4,389 SF Shop, 683 SF Out Building
- Fenced yard with parking
- Convenient to I-26 + I-77
- 16' -22' ceiling heights main plant with (3) 5 ton cranes
- 3 phase power
- Utilities available at site: electricity, well and septic



All information contained herein has been obtained from sources deemed reliable, but we cannot guarantee it. It is also subject to change without notice.

340 Rocky Slope Rd., Suite 302, Greenville, SC 29607

☎ 864-242-4200 • kdscaine.com • ✉ admin@kdscaine.com



*All information contained herein has been obtained from sources deemed reliable,
but we cannot guarantee it. It is also subject to change without notice.*

340 Rocky Slope Rd., Suite 302, Greenville, SC 29607

☎ 864-242-4200 • kdscaine.com • ✉ admin@kdscaine.com

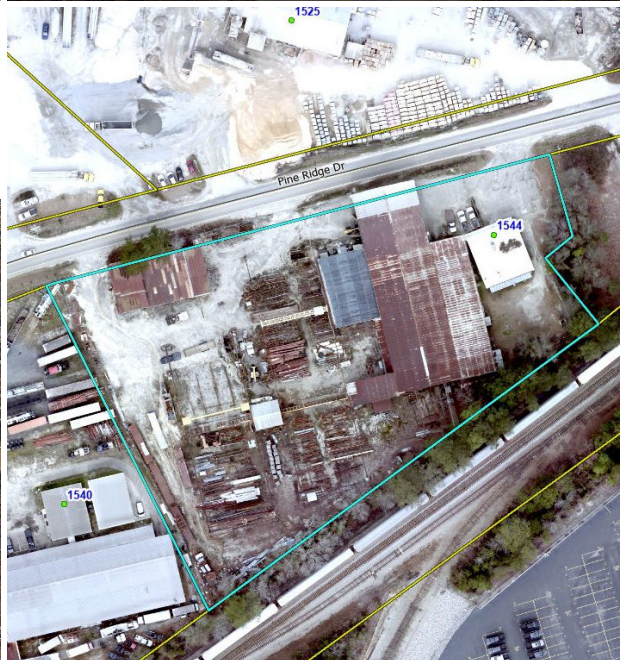
PHOTOS



*All information contained herein has been obtained from sources deemed reliable,
but we cannot guarantee it. It is also subject to change without notice.*

340 Rocky Slope Rd., Suite 302, Greenville, SC 29607

☎ 864-242-4200 • kdscaine.com • ✉ admin@kdscaine.com



All information contained herein has been obtained from sources deemed reliable, but we cannot guarantee it. It is also subject to change without notice.

340 Rocky Slope Rd., Suite 302, Greenville, SC 29607

☎ 864-242-4200 • kdscaine.com • ✉ admin@kdscaine.com