

## 116 E Main Street Easley, SC 29640

Ideal Redevelopment Opportunity in  
Downtown Easley

<b>Property Type</b>	Retail, Warehouse/Flex
<b>Status</b>	Sold
<b>Property ID</b>	4873
<b>Sale Price</b>	\$179,000
<b>Acreage</b>	+/- 0.72 Acre(s)
<b>Square Feet</b>	+/- 6,472 Square Feet
<b>Zoning</b>	CCD (Core Commercial District)
<b>County</b>	Pickens
<b>Tax Map</b>	5019-19-84-9082

### AGENT CONTACT



MARK RATCHFORD, MAI

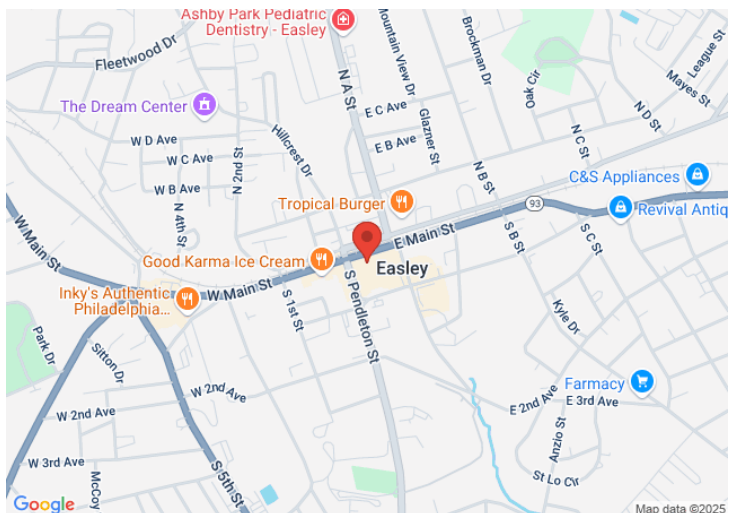
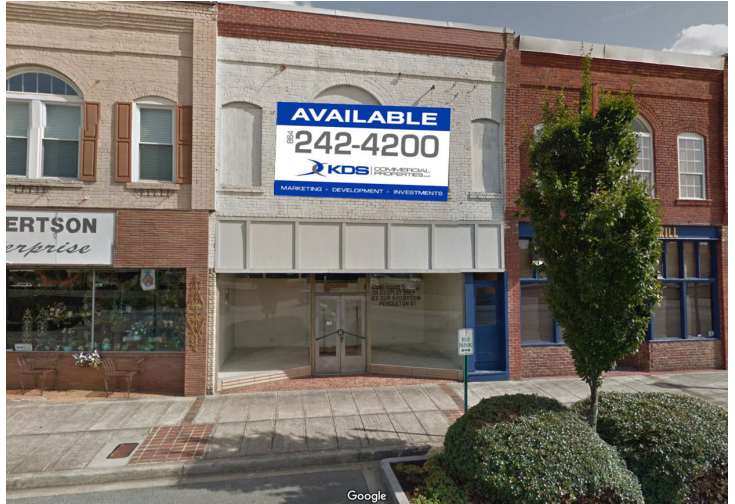
[mratchford@kdscaine.com](mailto:mratchford@kdscaine.com)

O: 864-242-4200

M: 864-430-0371

### PROPERTY FEATURES

- Old showroom & Storage for Mutual Home Stores
- 1st Floor: 3,209 SF
- 2nd Floor: 3,262 SF
- Shell Condition - No Partitions, Bathrooms, or HVAC
- Heart of Downtown Easley
- Ideal Redevelopment Opportunity: 1st Level Retail & 2nd Level Living
- Includes Unfinished Basement Area



*All information contained herein has been obtained from sources deemed reliable,  
but we cannot guarantee it. It is also subject to change without notice.*

340 Rocky Slope Rd., Suite 302, Greenville, SC 29607

☎ 864-242-4200 • [kdscaine.com](http://kdscaine.com) • ✉ [admin@kdscaine.com](mailto:admin@kdscaine.com)

## PHOTOS

---



*All information contained herein has been obtained from sources deemed reliable,  
but we cannot guarantee it. It is also subject to change without notice.*

**340 Rocky Slope Rd., Suite 302, Greenville, SC 29607**

**☎ 864-242-4200 • [kdscaine.com](http://kdscaine.com) • ✉ [admin@kdscaine.com](mailto:admin@kdscaine.com)**