

11 West Point Blvd. Mauldin, SC 29662

±4,234 SF Medical Office on ±0.772 acres

Property Type	Medical
Status	For Lease
Lease Rate	\$14/SF NNN
Acreage	+/- 0.772 Acre(s)
Square Feet	+/- 4,234 Square Feet
Zoning	C-2 - City of Mauldin
County	Greenville
Tax Map	M008010101518 & M00801010513



AGENT CONTACT

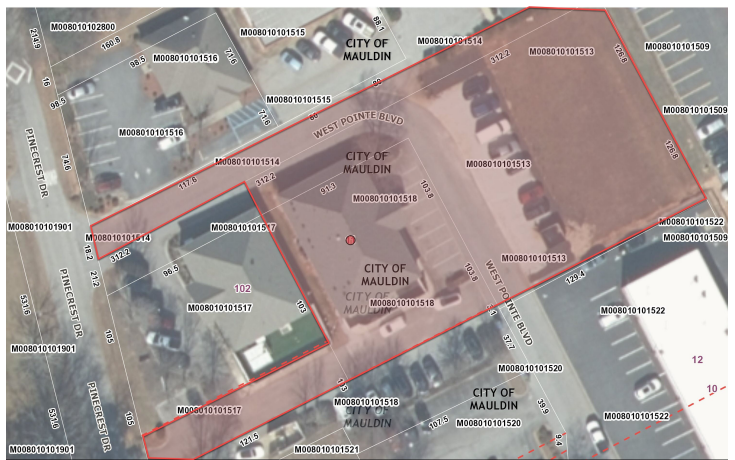


HARRY CROXTON

hcroxton@kdscaine.com

O: 864-242-4200

M: 404-985-8856



PROPERTY FEATURES

- ±4,234 SF medical office (previously a veterinary hospital)
- On-site parking with adjacent overflow parking if needed
- Zoned C-2, City of Mauldin
- (4) exam rooms expandable to additional rooms if needed (by re-purposing existing rooms), x-ray room, surgery suite, work room, etc.
- 2nd floor break area/meeting room, offices, etc.
- Excellent location for medical office, healthcare services, pet care/boarding, general office
- Signage available along W. Butler Road
- *Note: Veterinary clinic use is not allowed due to non-compete

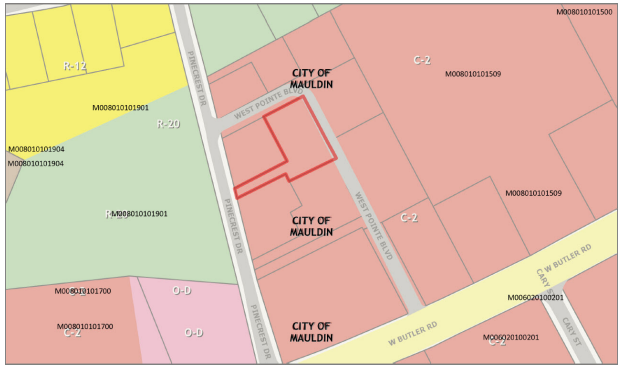


All information contained herein has been obtained from sources deemed reliable, but we cannot guarantee it. It is also subject to change without notice.

340 Rocky Slope Rd., Suite 302, Greenville, SC 29607

☎ 864-242-4200 • kdscaine.com • ✉ admin@kdscaine.com

PHOTOS



*All information contained herein has been obtained from sources deemed reliable,
but we cannot guarantee it. It is also subject to change without notice.*

340 Rocky Slope Rd., Suite 302, Greenville, SC 29607

☎ 864-242-4200 • kdscaine.com • ✉ admin@kdscaine.com