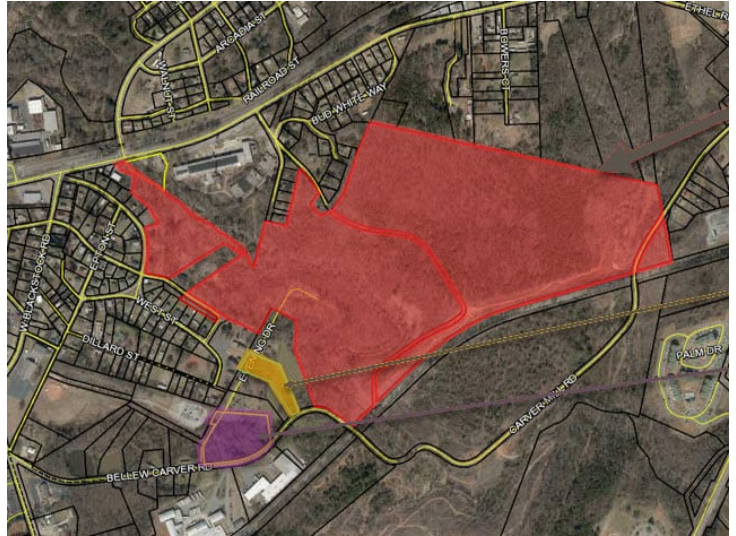


1001 Arcadia Station Road Spartanburg, SC 29301

6- to 100-Acre Tracts of Vacant Land |
Minutes to Downtown Spartanburg

Property Type	Land, Single-Family
Status	Sold
Acreage	+/- 100 Acre(s)
Zoning	Un-zoned
County	Spartanburg
Tax Map	6-17-12-029.00, 6-17-12-029.08, 6-17-00-045.00



AGENT CONTACT

PROPERTY FEATURES

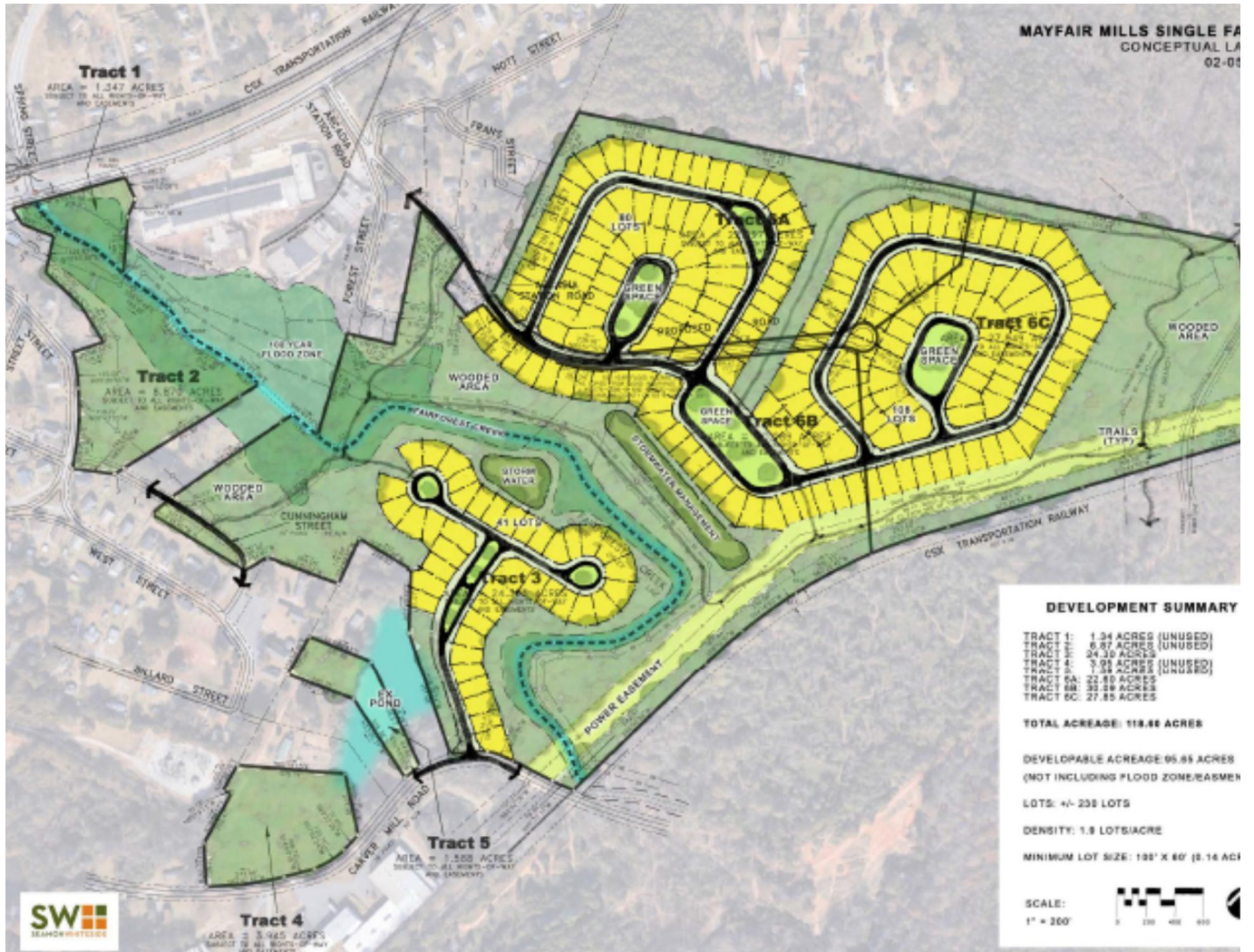
- Single and Multi-Family Land
- 6 to 100 Acres Priced to Sell - Pricing Based on Usable Acreage (see pricing file)
 - Tract 2: \$30,000/ac
 - Tract 3: \$16,000/ac
 - Tract 4: \$30,000/ac
 - Tract 5: \$15,000/ac
 - Tract 6 (A, B, & C): \$20,000/ac
- Adjacent to Renovated Mayfair Mills Apartments - Neighborhood Environment
- Minutes to Downtown Spartanburg
- School District 6: Arcadia Elementary, Fairforest Middle, & Dorman High Schools
- Utilities: Water, Electric, Cable, Sewer



All information contained herein has been obtained from sources deemed reliable, but we cannot guarantee it. It is also subject to change without notice.

340 Rocky Slope Rd., Suite 302, Greenville, SC 29607

☎ 864-242-4200 • kdscaine.com • ✉ admin@kdscaine.com



All information contained herein has been obtained from sources deemed reliable, but we cannot guarantee it. It is also subject to change without notice.

340 Rocky Slope Rd., Suite 302, Greenville, SC 29607

☎ 864-242-4200 · kdscaine.com · ✉ admin@kdscaine.com