

1000 Thousand Oaks Blvd. Greenville, SC 29607

Industrial Flex Building with Fenced Yard

Property Type	Flex Space, Industrial
Status	Leased
Lease Rate	\$10.50 NNN
Acreage	+/- 1 Acre(s)
Square Feet	+/- 7,000 Square Feet
Zoning	I-1
County	Greenville
Tax Map	0547030107502



AGENT CONTACT



RICKEY HEATON

rheaton@kdscaine.com

O: 864-242-4200 ext. 216

M: 864-350-0323

PROPERTY FEATURES

- 7,000 SF total | 5,850 SF Warehouse | 1,150 SF Office
- Lobby | Large Office | Two Bathrooms
- Two Drive-in Doors (14' x 10')
- Ceiling Height: 24' Eaves + 27' Center
- OPEX: \$1.00 SF (Estimate)

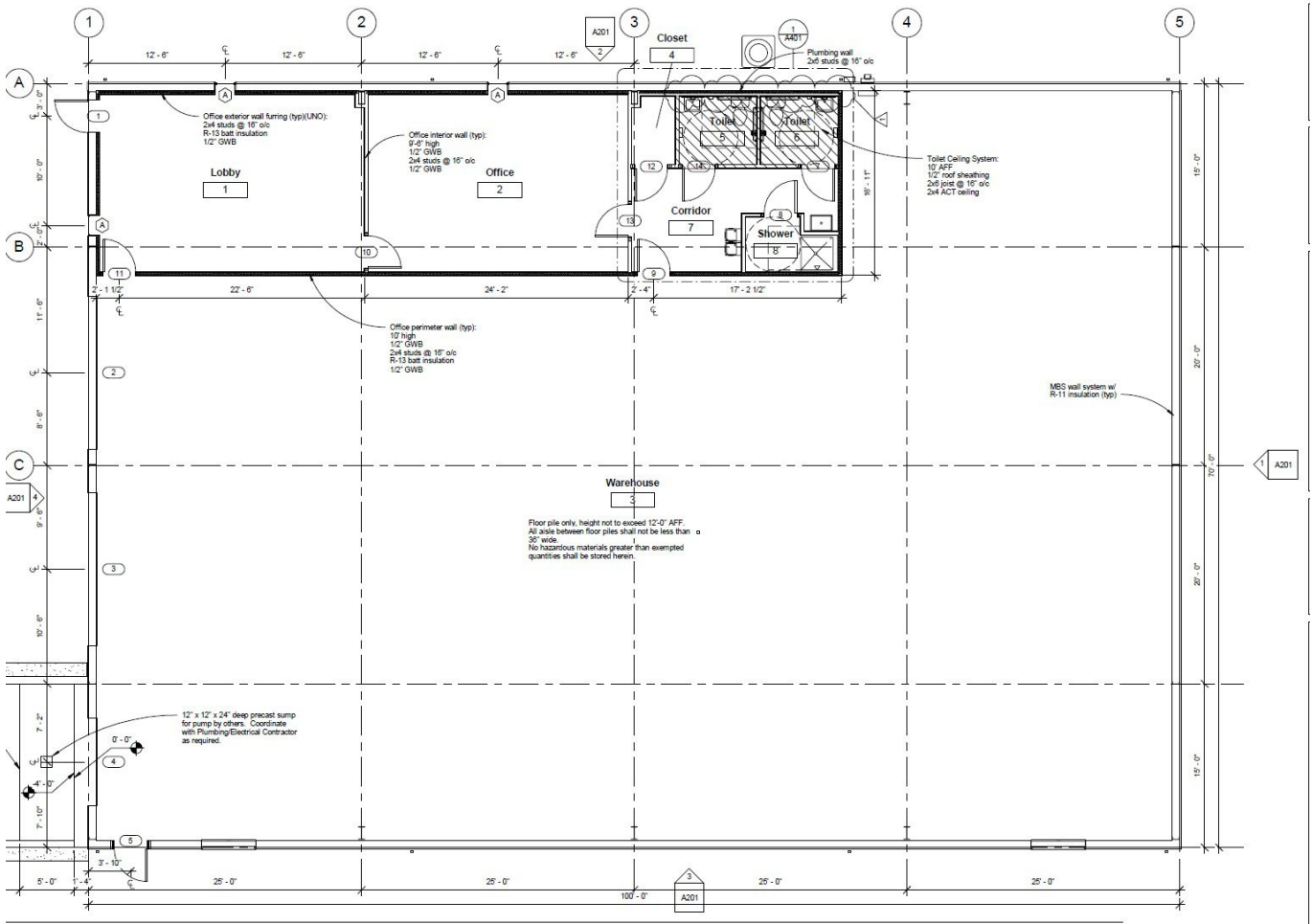


All information contained herein has been obtained from sources deemed reliable, but we cannot guarantee it. It is also subject to change without notice.

340 Rocky Slope Rd., Suite 302, Greenville, SC 29607

☎ 864-242-4200 · kdscaine.com · ✉ admin@kdscaine.com

FLOOR PLAN



All information contained herein has been obtained from sources deemed reliable, but we cannot guarantee it. It is also subject to change without notice.

340 Rocky Slope Rd., Suite 302, Greenville, SC 29607

☎ 864-242-4200 · kdscaine.com · ✉ admin@kdscaine.com

PHOTOS



All information contained herein has been obtained from sources deemed reliable, but we cannot guarantee it. It is also subject to change without notice.

340 Rocky Slope Rd., Suite 302, Greenville, SC 29607

☎ 864-242-4200 · kdscaine.com · ✉ admin@kdscaine.com