

12781 SC-121 Newberry, SC 29108

±22.5 Acres of Industrial or Homestead land on SC-121 & I-26 in Newberry, SC

Property Type	Land
Status	For Sale
Acreage	+/- 22.5 Acre(s)
Zoning	Commercial
County	Newberry
Tax Map	336-16, 336-17



AGENT CONTACT



GARY KIRBY

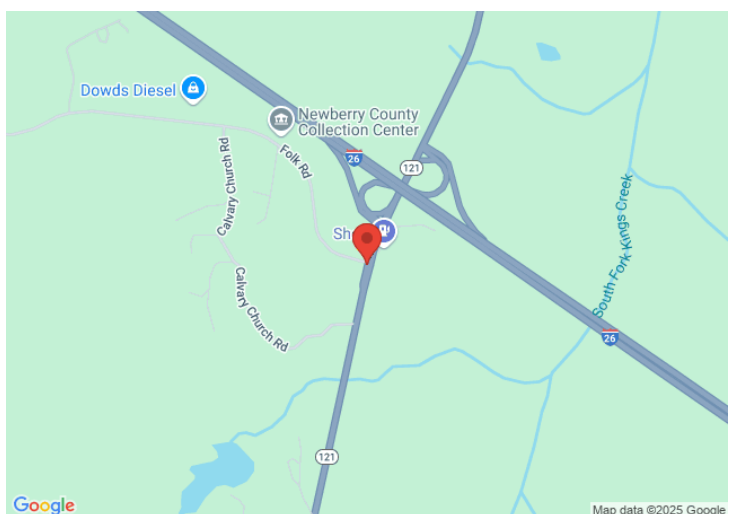
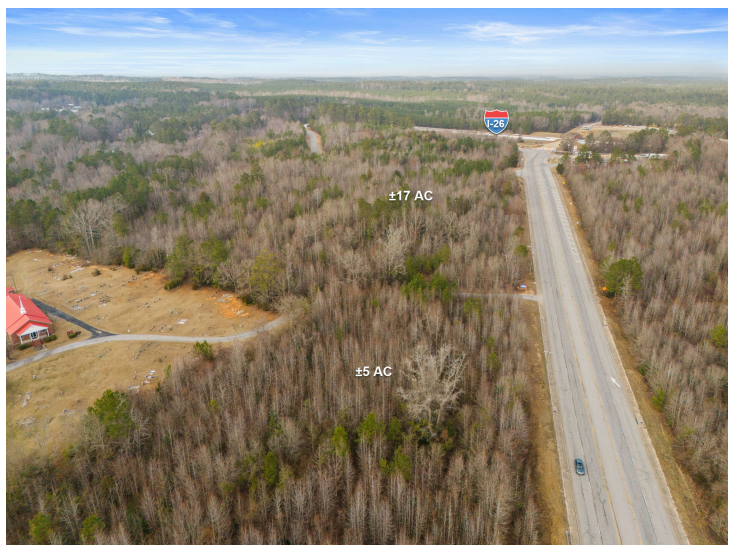
gkirby@kdscaine.com

[O: 864-242-4200](tel:864-242-4200)

[M: 864-650-5556](tel:864-650-5556)

PROPERTY FEATURES

- Contact broker for pricing
- ±22.5 Acres for homestead or recreational, 1,200 feet of frontage on SC 221
- Located off Exit 72 (SC 221) on I-26, a primary Exit into the town of Newberry, SC
- Zoned for General Commercial (GC) uses in Newberry County (potential to upzone to Industrial)
- Water available to site
- Seller open to subdividing
- 25 Minute Drive to Columbia, SC metro



All information contained herein has been obtained from sources deemed reliable, but we cannot guarantee it. It is also subject to change without notice.

340 Rocky Slope Rd., Suite 302, Greenville, SC 29607

📞 864-242-4200 · kdscaine.com · ✉ admin@kdscaine.com

PHOTOS



*All information contained herein has been obtained from sources deemed reliable,
but we cannot guarantee it. It is also subject to change without notice.*

340 Rocky Slope Rd., Suite 302, Greenville, SC 29607

☎ 864-242-4200 · kdscaine.com · ✉ admin@kdscaine.com