

Walnut Grove Pauline Road Pauline, SC 29374

Property Type	Land
Status	For Sale
Sale Price	\$958,320
Acreage	+/- 53 Acre(s)
Zoning	Spartanburg County ULMO
County	Spartanburg
Tax Map	6-49-00-025.00

AGENT CONTACT



TIM SATTERFIELD

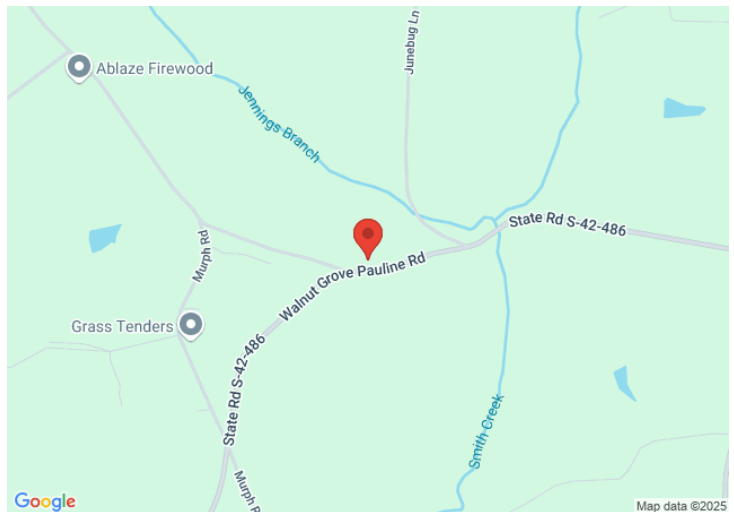
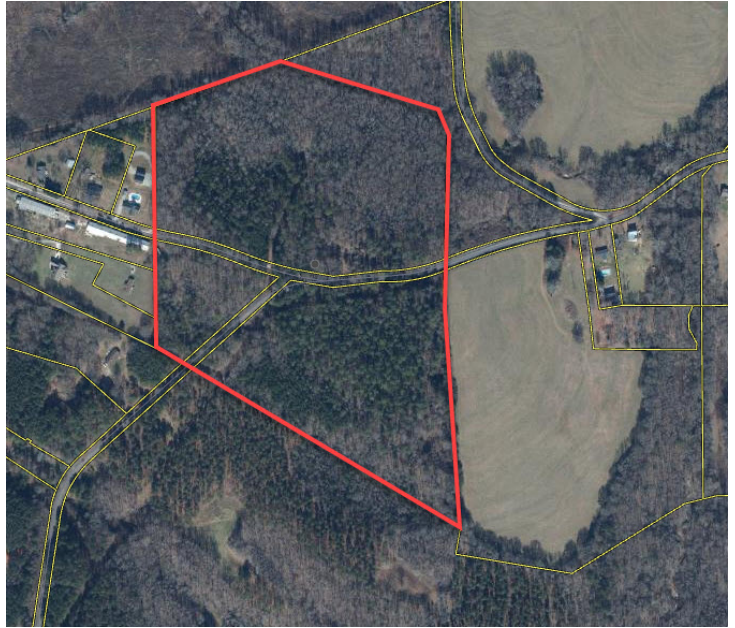
tsatterfield@kdscaine.com

[O: 864-242-4200](tel:864-242-4200)

[M: 864-415-2373](tel:864-415-2373)

PROPERTY FEATURES

- Approximately 53 acres along Walnut Grove Pauline Rd in Southern Spartanburg County - Perfect for recreational use or building your home
- Located off Highway 56 with easy access along Walnut Grove Pauline Rd, this private wooded setting is only 20 minutes from downtown Spartanburg
- Beautiful hardwood trees located on all of the property
- 1300 ft of road frontage along Walnut Grove Pauline Rd and 700 ft along Jewel Lane
- Recreational cabin on site with kitchen, bath, covered porch and fireplace



All information contained herein has been obtained from sources deemed reliable, but we cannot guarantee it. It is also subject to change without notice.

340 Rocky Slope Rd., Suite 302, Greenville, SC 29607

 864-242-4200 · kdscaine.com ·  admin@kdscaine.com